



Quality Tested[®]
Automotive Spare Parts

NEWS JULY 2025



www.qualitytested.com

CATALOGUE
FOR CARS AND
COMMERCIAL VEHICLES

CATALOGO
PER AUTOVETTURE E
VEICOLI COMMERCIALI

Brake system

BPW-311

Warning Contact, brake pad wear



IRISBUS DAILY TOURYS
IVECO DAILY Cassone / Furgonato / Promiscuo
IVECO DAILY III Pianale piatto/Telaio
IVECO DAILY IV Cassone / Furgonato / Promiscuo
IVECO DAILY IV Pianale piatto/Telaio

OE
42556205

Brake Type: Disc Brake
Fitting Position: Rear Axle
For OE number: 42556205
Warning Contact Length [mm]: 295

BPW-312

Warning Contact, brake pad wear



AUDI A3 (8V1)
AUDI A3 Cabriolet (8V7)
AUDI A3 Limousine (8VS)
AUDI A3 Sportback (8VA)
AUDI Q2
AUDI Q3 (F3B)

OE
8V0615437

Article number of recommended accessories:
50-00-0162
Article number of recommended accessories:
500162
Article number of recommended accessories:
PA-0162AF
Brake Type: Disc Brake
Fitting Position: Front Axle
For OE number: 8V0615437
Warning Contact Length [mm]: 170

BPW-313

Warning Contact, brake pad wear



AUDI A4 (8W2, B9)
AUDI A4 Allroad (8WH, B9)
AUDI A4 Avant (8W5, B9)
AUDI A5
AUDI A5 Cabriolet
AUDI A5 Sportback (F5A)

OE
8W0615121E

Brake Type: Disc Brake
Fitting Position: Rear Axle
For OE number: 8W0615121E
Warning Contact Length [mm]: 390

BPW-314

Warning Contact, brake pad wear



AUDI A6 (C8, 4A2)
AUDI A6 Allroad (4AH, C8)
AUDI A6 Avant (C8, 4A5)
AUDI A7 Sportback (4KA)
AUDI E-TRON (GEN_)
AUDI E-TRON Sportback (GEA)

OE
80A615121

Brake Type: Disc Brake
Fitting Position: Rear Axle
For OE number: 80A615121
Warning Contact Length [mm]: 345

Electrics

AL-101JM

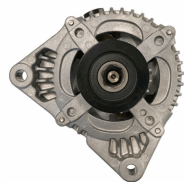
Alternator



ALFA ROMEO MITO (955)
CITROEN NEMO Station wagon
FIAT 500 (312)
FIAT 500 C (312)
FIAT DOBLO (119)
FIAT FIORINO MPV / Space wagon (225_)

OE
13117279
13117279YQ
13197577
13243463
13283344
1539099

Alternator Charge Current [A]: 190
Belt Pulley [mm]: 54
Clamp: M8 B+M5 D+
Number of Ribs: 6
Pulleys: with free-wheel belt pulley
Voltage [V]: 14

Electrics
AL-102JM
Alternator


FORD C-MAX (DM2)
 FORD FIESTA V (JH_, JD_)
 FORD FOCUS C-MAX
 FORD FOCUS II (DA_)
 FORD FOCUS II Cabriolet
 FORD FOCUS II Station wagon (DA_)

OE

1229258
 1229259
 1255711
 1255712
 1477737
 1477738

Alternator Charge Current [A]: 150
 Belt Pulley [mm]: 54
 Clamp: M8 B+ [FR-SIG-A]
 Number of Ribs: 6
 Pulleys: with free-wheel belt pulley
 Voltage [V]: 14

AL-103JM
Alternator


ALFA ROMEO 145 (930)
 ALFA ROMEO 146 (930)
 ALFA ROMEO 147 (937)
 ALFA ROMEO 156 (932)
 ALFA ROMEO 156 Sportwagon (932)
 ALFA ROMEO GT (937)

OE

46554408
 46763533
 46763534
 46765838
 46774430
 46782212

Alternator Charge Current [A]: 100
 Belt Pulley [mm]: 62
 Clamp: M8 B+ M5 D+
 Number of Ribs: 6
 Pulleys: with multi-belt pulley
 Voltage [V]: 14

AL-104JM
Alternator


ALFA ROMEO 147 (937)
 ALFA ROMEO 156 (932)
 ALFA ROMEO 156 Sportwagon (932)
 ALFA ROMEO 166 (936)
 FIAT BRAVA (182)
 FIAT BRAVO I (182)

OE

46543023
 46544329
 46748353
 46809068
 60815944
 60815953

Alternator Charge Current [A]: 120
 Belt Pulley [mm]: 62
 Clamp: M8 B+ M5 D+
 Number of Ribs: 6
 Pulleys: with free-wheel belt pulley
 Voltage [V]: 14

AL-105JM
Alternator


ALFA ROMEO MITO (955)
 FIAT 500 (312)
 FIAT 500 C (312)
 FIAT 500L
 FIAT BRAVO II (198)
 FIAT DOBLO (119)

OE

1202290
 1202445
 1535437
 1673521
 1705484
 2706074220

Alternator Charge Current [A]: 105
 Belt Pulley [mm]: 54
 Clamp: M8 B+, M5 D+
 Number of Ribs: 5
 Pulleys: with multi-belt pulley
 Voltage [V]: 14

AL-106JM
Alternator


ALFA ROMEO 159 (939)
 ALFA ROMEO 159 Sportwagon (939)
 ALFA ROMEO BRERA
 ALFA ROMEO GIULIETTA (940)
 ALFA ROMEO MITO (955)
 ALFA ROMEO SPIDER (939)

OE

0000051884886
 0051884886
 1202272
 1202274
 1204456
 1204457

Alternator Charge Current [A]: 120
 Belt Pulley [mm]: 54
 Clamp: M8 B+ M5 D+
 Number of Ribs: 6
 Pulleys: with free-wheel belt pulley
 Voltage [V]: 14

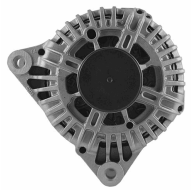
Electrics
AL-107JM
Alternator


AUDI A1 (8X1, 8XF)
 AUDI A1 Sportback (8XA, 8XK)
 AUDI A2 (8Z0)
 AUDI A3 (8L1)
 AUDI A3 (8P1)
 AUDI A3 Cabriolet (8P7)

OE

021903025K
 021903025T
 028903026H
 028903028E
 028903029G
 028903029GX

Alternator Charge Current [A]: 140
 Belt Pulley [mm]: 56
 Clamp: M8 B+ [L-DFM]
 Number of Ribs: 6
 Pulleys: with free-wheel belt pulley
 Voltage [V]: 14

AL-108JM
Alternator


CITROEN C3 I (FC_)
 CITROEN C4 Picasso I (UD_)
 CITROEN C5 I (DC_)
 CITROEN C8 (EA_, EB_)
 LANCIA PHEDRA (179)
 PEUGEOT 206 2 volumi /Coda spiovente (2A/C)

OE

12317794970
 1638095180
 3140069K00
 3140069K00000
 5702
 5702AR

Alternator Charge Current [A]: 150
 Belt Pulley [mm]: 54
 Clamp: M8 B+ [L-DFM]
 Number of Ribs: 6
 Pulleys: with free-wheel belt pulley
 Voltage [V]: 12

AL-109JM
Alternator


FORD B-MAX (JK)
 FORD C-MAX II
 FORD ECOSPORT
 FORD FIESTA VI
 FORD FOCUS III
 FORD FOCUS III Tre volumi

OE

1376501
 1387927
 1506299
 1506300
 1685793
 1704769

Alternator Charge Current [A]: 150
 Belt Pulley [mm]: 54
 Clamp: M8 B+ [LIN]
 Number of Ribs: 6
 Pulleys: with free-wheel belt pulley
 Voltage [V]: 14

AL-110JM
Alternator


CITROEN BERLINGO (B9)
 CITROEN BERLINGO (MF)
 CITROEN C-ELYSEE
 CITROEN C2 (JM_)
 CITROEN C3 I (FC_)
 CITROEN C3 II

OE

27060YV010
 5702000000
 570200000000
 5702A2
 5702A3
 5702A4

Alternator Charge Current [A]: 90
 Belt Pulley [mm]: 49
 Clamp: M8 B+ [L-DFM]
 Number of Ribs: 6
 Pulleys: with multi-belt pulley
 Voltage [V]: 12

AL-111JM
Alternator


OPEL ASTRA H (L48)
 OPEL ASTRA H GTC (L08)
 OPEL ASTRA H Station wagon (L35)
 OPEL ASTRA H Tre volumi (L69)
 VAUXHALL ASTRA Mk V (H) 2 volumi /Coda spiovente

OE

1204619
 2506102
 2506103
 6204183
 6204199
 6204200

Alternator Charge Current [A]: 100
 Alternator Type: incl. vacuum pump
 Belt Pulley [mm]: 60
 Clamp: M8 B+ [F-L]
 Number of Ribs: 6
 Pulleys: with free-wheel belt pulley
 Voltage [V]: 14

Electrics

AL-112JM

Alternator



ALFA ROMEO 159 (939)
ALFA ROMEO 159 Sportwagon (939)
FIAT GRANDE PUNTO (199)
FIAT SEDICI
FIAT STILO (192)
FIAT STILO Multi Wagon (192)

OE

1204434
1204436
12759595
13117236
13117341
13117341AA

Alternator Charge Current [A]: 130
Belt Pulley [mm]: 62
Clamp: M8 B+ M6 DFM, M5 D+
Number of Ribs: 6
Pulleys: with free-wheel belt pulley
Voltage [V]: 14

AL-113JM

Alternator



ALFA ROMEO MITO (955)
CITROEN NEMO Station wagon
FIAT 500 (312)
FIAT 500 C (312)
FIAT DOBLO (119)
FIAT FIORINO MPV / Space wagon (225_)

OE

1204429
13153237
13197578
13256928
13256929
1606439580

Alternator Charge Current [A]: 120
Belt Pulley [mm]: 54
Clamp: M8 B+ M5 D+
Number of Ribs: 6
Pulleys: with free-wheel belt pulley
Voltage [V]: 14

AL-114JM

Alternator



OPEL AGILA (A) (H00)
OPEL AGILA (B) (H08)
OPEL ASTRA H (L48)
OPEL ASTRA H GTC (L08)
OPEL ASTRA H Station wagon (L35)
OPEL ASTRA H Tre volumi (L69)

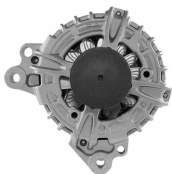
OE

13222935
13222936
13256931
13256932
6204258
6204259

Alternator Charge Current [A]: 120
Belt Pulley [mm]: 54
Clamp: M8 B+ [DFM-L]
Number of Ribs: 6
Pulleys: with free-wheel belt pulley
Voltage [V]: 12

AL-115JM

Alternator



AUDI A1 (8X1, 8XF)
AUDI A1 Sportback (8XA, 8XK)
AUDI A3 (8V1)
AUDI A3 Cabriolet (8V7)
AUDI A3 Limousine (8VS)
AUDI A3 Sportback (8VA)

OE

03G903016B
03G903016BX
03G903016E
03G903016EX
03G903016G
03G903016GX

Alternator Charge Current [A]: 140
Belt Pulley [mm]: 49
Clamp: M8 B+ [LIN]
Number of Ribs: 6
Pulleys: with free-wheel belt pulley
Voltage [V]: 14

AL-116JM

Alternator



MITSUBISHI L 200 (K7_T, K6_T)
MITSUBISHI PAJERO II (V3_W, V2_W, V4_W)
MITSUBISHI PAJERO II Canvas Top (V2_W, V4_W)
MITSUBISHI PAJERO SPORT (K90)

OE

1800A005
1800A243
A002T1199AT
A002T81499
A002T82899
A002T82899A

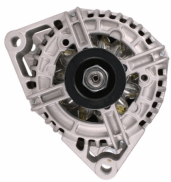
Alternator Charge Current [A]: 90
Alternator Type: incl. vacuum pump
Belt Pulley [mm]: 76
Clamp: M8 [L-S]
Number of Ribs: 2
Pulleys: Without multi-belt pulley
Voltage [V]: 12

Electrics
AL-117JM
Alternator


ALFA ROMEO MITO (955)
 CHRYSLER YPSILON
 FIAT 500 (312)
 FIAT 500 C (312)
 FIAT 500L
 FIAT 500X

OE
 1608858180
 51880172
 51880173
 51880175
 51984058
 51993603

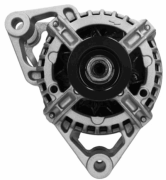
Alternator Charge Current [A]: 120
 Belt Pulley [mm]: 54
 Clamp: M8 B+ [LIN]
 Number of Ribs: 6
 Pulleys: with free-wheel belt pulley
 Voltage [V]: 12

AL-118JM
Alternator


OPEL ASTRA CLASSIC (L48)
 OPEL ASTRA CLASSIC Station wagon
 OPEL ASTRA G 2 volumi /Coda spiovente (F48_,
 F08_)
 OPEL ASTRA G Station wagon (F35_)
 OPEL ASTRA G Tre volumi (F69_)

OE
 09117935
 10480226
 1204155
 13143128
 13156053
 2437121

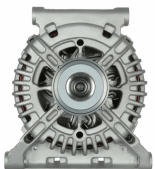
Alternator Charge Current [A]: 120
 Belt Pulley [mm]: 54
 Clamp: M8 B+
 Number of Ribs: 5
 Pulleys: with multi-belt pulley
 Voltage [V]: 12

AL-119JM
Alternator


OPEL AGILA (A) (H00)
 OPEL ASTRA H Station wagon (L35)
 OPEL CORSA B (73_, 78_, 79_)
 OPEL CORSA D
 VAUXHALL AGILA Mk I (A)
 VAUXHALL CORSA Mk I (B)

OE
 09117932
 09133599
 1204136
 13156052
 24437119
 24463064YJ

Alternator Charge Current [A]: 70
 Belt Pulley [mm]: 52
 Clamp: M8 B+
 Number of Ribs: 5
 Pulleys: with multi-belt pulley
 Voltage [V]: 12

AL-120JM
Alternator


MERCEDES-BENZ CLASSE A (W169)
 MERCEDES-BENZ CLASSE B (W245)

OE
 6401540102
 6401540202
 6401540302
 6401540402
 6401540502
 640154050280

Alternator Charge Current [A]: 150
 Belt Pulley [mm]: 50
 Clamp: M8 B+ [LIN]
 Number of Ribs: 5
 Pulleys: with free-wheel belt pulley
 Voltage [V]: 12

AL-121JM
Alternator


CITROEN BERLINGO (B9)
 CITROEN BERLINGO (K9)
 CITROEN C-ELYSEE
 CITROEN C3 AIRCROSS II
 CITROEN C3 II
 CITROEN C3 III (SX)

OE
 1606859180
 1609957280
 1611285580
 1612458880
 1623862880
 1638094380

Alternator Charge Current [A]: 150
 Belt Pulley [mm]: 54
 Clamp: M8 B+ [LIN]
 Number of Ribs: 6
 Pulleys: with free-wheel belt pulley
 Voltage [V]: 14

Electrics
AL-122JM
Alternator


AUDI A2 (8Z0)
 AUDI A3 (8L1)
 AUDI A3 (8P1)
 AUDI A3 Cabriolet (8P7)
 AUDI A3 Sportback (8PA)
 AUDI TT (8N3)

OE

021903025H
 021903025J
 028903028C
 028903028CX
 028903028D
 028903028DX

Alternator Charge Current [A]: 110
 Belt Pulley [mm]: 56
 Clamp: M8 B+ [L-DFM]
 Number of Ribs: 6
 Pulleys: with multi-belt pulley
 Voltage [V]: 14

AL-123JM
Alternator


AUDI A2 (8Z0)
 AUDI A3 (8L1)
 AUDI TT (8N3)
 AUDI TT Roadster (8N9)
 FORD GALAXY (WGR)
 SEAT ALHAMBRA (7V8, 7V9)

OE

038903018LX
 038903018P
 038903018PX
 038903023
 038903023K
 038903023L

Alternator Charge Current [A]: 90
 Belt Pulley [mm]: 56
 Clamp: M8 B+ [L-DFM]
 Number of Ribs: 6
 Pulleys: with free-wheel belt pulley
 Voltage [V]: 12

AL-124JM
Alternator


ALFA ROMEO AR 6 Furgonato (280)
 ALFA ROMEO AR 8 Furgonato (280)
 ALFA ROMEO AR 8 Pianale piatto/Telaio (280)
 FIAT 127
 FIAT 127 Panorama
 FIAT 131

OE

116760506000
 116760506100
 1516538R
 1516607R
 2022607
 2995030

Alternator Charge Current [A]: 55
 Belt Pulley [mm]: 86
 Clamp: M6,D+
 Number of Ribs: 1
 Pulleys: Without multi-belt pulley
 Voltage [V]: 12

AL-125JM
Alternator


AUTOBIANCHI Y10
 FIAT PANDA (141A_)
 FIAT TIPO (160)
 FIAT UNO (146A/E)
 LANCIA Y10 (156)

OE

000007565832
 000046231660
 11572630
 11572690
 11572700
 46231657

Alternator Charge Current [A]: 55
 Belt Pulley [mm]: 65
 Clamp: M6,D+
 Number of Ribs: 1
 Pulleys: Without multi-belt pulley
 Voltage [V]: 12

AL-126JM
Alternator


FIAT 127
 FIAT CINQUECENTO (170)
 FIAT PANDA (141A_)
 FIAT SEICENTO (187)
 FIAT UNO (146A/E)
 LANCIA A 112

OE

0003934961
 2702061013
 2702061100
 2702061130
 4242498
 4274759

Alternator Charge Current [A]: 55
 Belt Pulley [mm]: 66
 Clamp: M6,D+
 Number of Ribs: 1
 Pulleys: Without multi-belt pulley
 Voltage [V]: 12

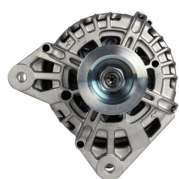
Electrics
AL-127JM
Alternator


ALFA ROMEO 33 (907A)
 ALFA ROMEO 6 (119)
 ALFA ROMEO 75 (162B)
 FIAT CROMA (154)
 LANCIA THEMA (834)
 LANCIA THEMA SW (834)

OE

1204072
 1204344
 294394800
 46231726
 46231758
 4765931

Alternator Charge Current [A]: 65
 Belt Pulley [mm]: 93
 Clamp: M6,D+
 Number of Ribs: 2
 Pulleys: Without multi-belt pulley
 Voltage [V]: 12

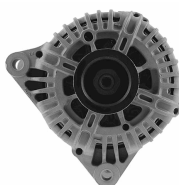
AL-128JM
Alternator


RENAULT CLIO Grandtour (KR0/1_)
 RENAULT CLIO Grandtour IV
 RENAULT CLIO III (BR0/1, CR0/1)
 RENAULT CLIO IV
 RENAULT MODUS / GRAND MODUS (F/JP0_)
 RENAULT TWINGO II (CN0_)

OE

231000646R
 7711368178
 7711368602
 7711368683
 7711497091
 7711497092

Alternator Charge Current [A]: 120
 Belt Pulley [mm]: 55
 Clamp: M8 B+ [BSS]
 Number of Ribs: 7
 Pulleys: with multi-belt pulley
 Voltage [V]: 14

AL-129JM
Alternator


CITROEN BERLINGO (MF)
 CITROEN C1 (PM_, PN_)
 CITROEN C2 (JM_)
 CITROEN C3 I (FC_)
 CITROEN C3 Pluriel (HB_)
 CITROEN C4 Coupé (LA_)

OE

27060YU020
 27060YV020
 3140073J00
 3140073J00000
 5702A6
 5702A7

Alternator Charge Current [A]: 150
 Belt Pulley [mm]: 54
 Clamp: M8 B+ [L-DFM]
 Number of Ribs: 6
 Pulleys: with multi-belt pulley
 Voltage [V]: 14

AL-130JM
Alternator


ABARTH PUNTO EVO (199_)
 ALFA ROMEO GIULIETTA (940)
 ALFA ROMEO MITO (955)
 FIAT 500 (312)
 FIAT 500 C (312)
 FIAT 500L

OE

51788658
 51854903
 51927506
 52003527
 52003621
 71796446

Alternator Charge Current [A]: 120
 Belt Pulley [mm]: 54
 Clamp: M8 B+ M5 D+
 Number of Ribs: 5
 Pulleys: with free-wheel belt pulley
 Voltage [V]: 14

AL-131JM
Alternator


DACIA DOKKER
 DACIA DUSTER
 DACIA LODGY
 DACIA LOGAN II
 DACIA LOGAN MCV II
 DACIA SANDERO II

OE

231000026R
 7711368381
 7711497409
 8200390676
 8200660034

Alternator Charge Current [A]: 160
 Belt Pulley [mm]: 55
 Clamp: M8 B+ [BSS]
 Number of Ribs: 6
 Pulleys: with free-wheel belt pulley
 Voltage [V]: 14

Electrics
AL-132JM
Alternator

 CHRYSLER DELTA
 FIAT FREEMONT (JF_)

OE

 56029574AA
 K56029574AA
 K56029574AB
 P56029574AA
 TT13138

 Alternator Charge Current [A]: 130
 Belt Pulley [mm]: 54
 Clamp: M8 B+ [LIN]
 Number of Ribs: 6
 Pulleys: with free-wheel belt pulley
 Voltage [V]: 14

AL-133JM
Alternator

 TOYOTA AURIS (NRE15_, ZZE15_, ADE15_,
 ZRE15_, NDE15_)
 TOYOTA AVENSIS
 TOYOTA AVENSIS (T25_)
 TOYOTA AVENSIS Station wagon (T25)
 TOYOTA AVENSIS Station wagon (ZRT27,

OE

 270600G010
 270600G011
 270600G01184
 270600R060
 270600R070
 270600R071

 Alternator Charge Current [A]: 100
 Belt Pulley [mm]: 58
 Clamp: [RLO-DFM-IG-L]
 Number of Ribs: 7
 Pulleys: with free-wheel belt pulley
 Voltage [V]: 14

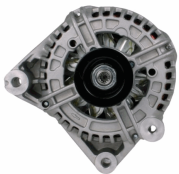
AL-134JM
Alternator

 LEXUS IS II (GSE2_, ALE2_, USE2_)
 TOYOTA AURIS (NRE15_, ZZE15_, ADE15_,
 ZRE15_, NDE15_)
 TOYOTA AVENSIS
 TOYOTA AVENSIS Station wagon (ZRT27,
 ADT27)

OE

 0210802470
 270600G021
 270600R080
 2706026030
 270602603084
 2706026060

 Alternator Charge Current [A]: 150
 Belt Pulley [mm]: 58
 Clamp: M6 B+ [RLO-DFM-IG-L]
 Number of Ribs: 7
 Pulleys: with free-wheel belt pulley
 Voltage [V]: 14

AL-135JM
Alternator

 BMW 3 (E46)
 BMW 3 Cabriolet (E46)
 BMW 3 Compact (E46)
 BMW 3 Coupe (E46)
 BMW 3 Touring (E46)
 BMW X3 (E83)

OE

 12317789980
 12317789983
 12317797660
 12317797661
 7789980
 7789980A101

 Alternator Charge Current [A]: 150
 Belt Pulley [mm]: 54
 Clamp: M8 B+ [L-DFM]
 Number of Ribs: 6
 Pulleys: with multi-belt pulley
 Voltage [V]: 12

AL-136JM
Alternator

 FORD FIESTA V (JH_, JD_)
 FORD FUSION (JU_)
 MAZDA 2 (DY)

OE

 2S6TAC
 2S6TAD
 3S6TAD
 Y40118300B

 Alternator Charge Current [A]: 80
 Belt Pulley [mm]: 54
 Clamp: M8 B+ [FR-SIG-A]
 Number of Ribs: 6
 Pulleys: with free-wheel belt pulley
 Voltage [V]: 14

Electrics
AL-137JM
Alternator


BMW 1 (E87)
 BMW 3 (E90)
 BMW 3 Cabriolet (E93)
 BMW 3 Coupé (E92)
 BMW 3 Touring (E91)

OE

12317790548
 12317795620
 12317797519
 12317797520
 12317799180
 12317799181

Alternator Charge Current [A]: 150
 Belt Pulley [mm]: 54
 Clamp: M8 B+ [COM]
 Number of Ribs: 6
 Pulleys: with multi-belt pulley
 Voltage [V]: 14

AL-138JM
Alternator


FIAT DUCATO Autobus (244, Z_)
 FIAT DUCATO Autobus (250)
 FIAT DUCATO Furgonato (244)
 FIAT DUCATO Furgonato (250)
 FIAT DUCATO Pianale piatto/Telaio (244)
 FIAT DUCATO Pianale piatto/Telaio (250)

OE

1506770R
 2995390
 500059504
 504009977
 504009978
 5801377162

Alternator Charge Current [A]: 140
 Belt Pulley [mm]: 55
 Clamp: M8 B+ [L-DFM]
 Number of Ribs: 7
 Pulleys: with multi-belt pulley
 Voltage [V]: 14

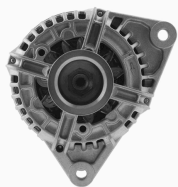
AL-139JM
Alternator


DACIA DOKKER
 DACIA DUSTER
 DACIA LODGY
 DACIA LOGAN (LS_)
 DACIA LOGAN II
 DACIA LOGAN MCV (KS_)

OE

1121540202
 1121542002
 2310000Q0M
 2310000Q2J
 2310000Q2JEX
 2310000QBH

Alternator Charge Current [A]: 150
 Belt Pulley [mm]: 55
 Clamp: M8 B+ [L-DFM]
 Number of Ribs: 6
 Pulleys: with free-wheel belt pulley
 Voltage [V]: 14

AL-140JM
Alternator


IVECO DAILY III Autobus
 IVECO DAILY III Cassone / Furgonato / Promiscuo
 IVECO DAILY III Pianale piatto/Telaio
 RENAULT MASCOTT Pianale piatto/Telaio (UH_, HH_)

OE

1524013R
 2995544
 2995548
 2995982
 2995984
 47129299

Alternator Charge Current [A]: 120
 Belt Pulley [mm]: 68
 Clamp: M8 B+ [L-DFM]
 Number of Ribs: 6
 Pulleys: with multi-belt pulley
 Voltage [V]: 14

AL-141JM
Alternator


FORD FIESTA V (JH_, JD_)
 FORD FUSION (JU_)

OE

1140135
 1303447
 1464756
 1464788
 1477856
 1477859

Alternator Charge Current [A]: 80
 Belt Pulley [mm]: 54
 Clamp: M8 B+ [FR-SIG-A]
 Number of Ribs: 6
 Pulleys: with multi-belt pulley
 Voltage [V]: 14

Electrics
AL-142JM
Alternator


FORD FOCUS (DAW, DBW)
 FORD FOCUS Station wagon (DNW)
 FORD FOCUS Tre volumi (DFW)

OE

1079312
 1097306
 1126051
 1138231
 1144182
 1144183

Alternator Charge Current [A]: 90
 Belt Pulley [mm]: 78
 Clamp: M8 B+ [FR-SIG-A]
 Pulleys: Without multi-belt pulley
 Voltage [V]: 14

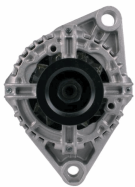
AL-143JM
Alternator


BMW 1 (E81)
 BMW 1 (E87)
 BMW 1 Cabriolet (E88)
 BMW 1 Coupé (E82)
 BMW 3 (E90)
 BMW 3 Cabriolet (E93)

OE

12317802261
 12317802619
 7802261
 7802619

Alternator Charge Current [A]: 180
 Belt Pulley [mm]: 53
 Clamp: M6 B+ [COM-BSS]
 Number of Ribs: 6
 Pulleys: with multi-belt pulley
 Voltage [V]: 14

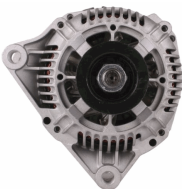
AL-144JM
Alternator


FIAT BRAVA (182)
 FIAT BRAVO I (182)
 FIAT DOBLO (119)
 FIAT MAREA (185)
 FIAT MAREA Weekend (185)
 FIAT MULTIPLA (186)

OE

46420963
 46532667
 46532668
 46532669
 468130061
 46813061

Alternator Charge Current [A]: 105
 Belt Pulley [mm]: 60
 Clamp: M8
 Number of Ribs: 5
 Pulleys: with multi-belt pulley
 Voltage [V]: 12

AL-145JM
Alternator


CITROEN BERLINGO (MF)
 CITROEN C5 I (DC_)
 CITROEN C5 I Break (DE_)
 CITROEN EVASION (22, U6)
 CITROEN XANTIA (X2)
 CITROEN XANTIA Break (X2)

OE

1516470R
 1516478R
 1516492R
 57052A
 57052B
 57052C

Alternator Charge Current [A]: 90
 Belt Pulley [mm]: 55
 Clamp: M8 B+,M5 D+ W
 Number of Ribs: 6
 Pulleys: with multi-belt pulley
 Voltage [V]: 14

AL-146JM
Alternator


AUTOBIANCHI Y10
 FIAT 126
 FIAT 127
 FIAT 127 Panorama
 FIAT 147
 FIAT CINQUECENTO (170)

OE

076903023G
 43231721
 4395131
 4419109
 4434084
 4470266

Alternator Charge Current [A]: 65
 Belt Pulley [mm]: 58
 Clamp: M6
 Number of Ribs: 5
 Pulleys: with multi-belt pulley
 Voltage [V]: 12

Electrics
AL-147JM
Alternator


TOYOTA YARIS (SCP9_, NSP9_, KSP9_, NCP9_, ZSP9_)

OE
 270600Q060
 2706040040
 2706040041

Alternator Charge Current [A]: 80
 Belt Pulley [mm]: 80
 Clamp: M6 B+ [RLO-DFM-IG-L]
 Number of Ribs: 6
 Pulleys: with multi-belt pulley
 Voltage [V]: 14

AL-148JM
Alternator


MERCEDES-BENZ CLASSE C (W202)
 MERCEDES-BENZ CLASSE C Station wagon (S202)
 MERCEDES-BENZ CLASSE E (W210)
 MERCEDES-BENZ CLASSE E Station wagon (S210)

OE
 0101545902
 010154590280
 0101546302
 0101549502
 010154950280
 0101549602

Alternator Charge Current [A]: 120
 Belt Pulley [mm]: 50
 Clamp: M8 B+ M5 D+
 Number of Ribs: 6
 Pulleys: with free-wheel belt pulley
 Voltage [V]: 14

AL-149JM
Alternator


CITROEN JUMPER Autobus (230P)
 CITROEN JUMPER Autobus (244, Z_)
 CITROEN JUMPER Furgonato (230L)
 CITROEN JUMPER Furgonato (244)
 CITROEN JUMPER Pianale piatto/Telaio (230)
 CITROEN JUMPER Pianale piatto/Telaio (244)

OE
 12090113
 500345767
 500371244
 504033459
 5702A8
 5702A9

Alternator Charge Current [A]: 150
 Belt Pulley [mm]: 60
 Clamp: M5 D+
 Number of Ribs: 6
 Pulleys: with multi-belt pulley
 Voltage [V]: 12

AL-150JM
Alternator


AUDI 80 Avant (8C, B4)
 AUDI 90 (89, 89Q, 8A, B3)
 BAOLONG LINGHUI
 BAOLONG LINGJUN
 BAOLONG LINGQI
 CHEVROLET CLASSIC

OE
 038520135A
 1516473R
 1516529R
 2997074
 38520135A
 4152610

Alternator Charge Current [A]: 35
 Belt Pulley [mm]: 95
 Clamp: M6
 Number of Ribs: 1
 Pulleys: Without multi-belt pulley
 Voltage [V]: 24

AL-151JM
Alternator


LAND ROVER DEFENDER Cabrio (LD)
 LAND ROVER DEFENDER Station Wagon (LD)

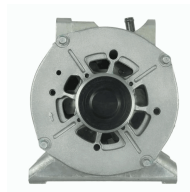
OE
 1372736
 1374171
 1404791
 1474021
 1572736
 1581842

Alternator Charge Current [A]: 150
 Belt Pulley [mm]: 59
 Clamp: M8 B+ [L-DFM]
 Number of Ribs: 6
 Pulleys: with free-wheel belt pulley
 Voltage [V]: 14

Electrics

AL-152JM

Alternator



MERCEDES-BENZ CLASSE A (W168)
 MERCEDES-BENZ Vaneo (414)

OE

6681540102
 668154010280
 6681540202
 668154020280
 6681540302
 668154030280

Alternator Charge Current [A]: 150
 Belt Pulley [mm]: 50
 Clamp: M8 B+ [L-DFM]
 Number of Ribs: 5
 Pulleys: with multi-belt pulley
 Voltage [V]: 12

AL-153JM

Alternator



ABARTH PUNTO EVO (199)
 ALFA ROMEO MITO (955)
 FIAT 500 (312)
 FIAT 500 C (312)
 FIAT 500L
 FIAT BRAVO II (198)

OE

1202288
 1202463
 1535436
 1673520
 1705483
 1719535

Alternator Charge Current [A]: 105
 Belt Pulley [mm]: 54
 Clamp: M8 B+, M5 D+
 Number of Ribs: 4
 Pulleys: with multi-belt pulley
 Voltage [V]: 14

AL-154JM

Alternator



NISSAN PATHFINDER
 NISSAN PRIMERA (P12)
 NISSAN PRIMERA Hatchback (P12)
 NISSAN PRIMERA Station wagon (WP12)
 NISSAN TERRANO I (WD21)
 RENAULT GRAND SCÉNIC II (JM0/1_)

OE

2303011252
 2310000Q0F
 2310000Q0L
 2310000Q2F
 2310000QAN
 23100AW300

Alternator Charge Current [A]: 150
 Belt Pulley [mm]: 49
 Clamp: M8 B+ [L-DFM]
 Number of Ribs: 7
 Pulleys: with multi-belt pulley
 Voltage [V]: 14

AL-155JM

Alternator



NISSAN TERRANO
 RENAULT ESPACE IV (JK0/1_)
 RENAULT LAGUNA Coupé (DT0/1)
 RENAULT LAGUNA II (BG0/1_)
 RENAULT LAGUNA II Grandtour (KG0/1_)
 RENAULT LAGUNA III (BT0/1)

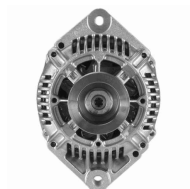
OE

1204193
 2310000Q0J
 231001202R
 4431340
 7711368437
 8200404459

Alternator Charge Current [A]: 150
 Belt Pulley [mm]: 49
 Clamp: M8 B+ [L-DFM]
 Number of Ribs: 7
 Pulleys: with free-wheel belt pulley
 Voltage [V]: 14

AL-156JM

Alternator



FIAT BRAVA (182)
 PEUGEOT 307 Break (3E)
 RENAULT MEGANE I (BA0/1_)
 RENAULT MEGANE I Cabriolet (EA0/1_)
 RENAULT MEGANE I Classic (LA0/1_)
 RENAULT MEGANE I Coach (DA0/1_)

OE

12317519621
 12317519622
 1516403R
 4403214
 4403215
 4500044

Alternator Charge Current [A]: 110
 Belt Pulley [mm]: 55
 Clamp: M8 D+ W
 Number of Ribs: 6
 Pulleys: with multi-belt pulley
 Voltage [V]: 12

Electrics

AL-157JM

Alternator



SMART CABRIO (450)
 SMART CITY-COUPE (450)
 SMART CROSSBLADE (450)
 SMART FORTWO Cabrio (450)
 SMART FORTWO Coupé (450)
 SMART ROADSTER (452)

OE

0002801V002
 0002801V003
 0002801V004
 0002801V005
 0002801V006
 0002801V007

Alternator Charge Current [A]: 75
 Belt Pulley [mm]: 58
 Clamp: M6 B+ M5 D+ M5 ,PHIN
 Number of Ribs: 4
 Pulleys: with multi-belt pulley
 Voltage [V]: 14

AL-158JM

Alternator



ALFA ROMEO GIULIETTA (940)
 FIAT 500L
 FIAT 500X
 FIAT TIPO (356)
 FIAT TIPO 2 volumi /Coda spiovente (356_)
 FIAT TIPO Station wagon (356_)

OE

17197917
 51884351
 51944891
 71796428

Alternator Charge Current [A]: 120
 Belt Pulley [mm]: 54
 Clamp: M8 B+ [LIN]
 Number of Ribs: 6
 Pulleys: with free-wheel belt pulley
 Voltage [V]: 14

AL-159JM

Alternator



FIAT SEDICI
 OPEL AGILA (B) (H08)
 SUZUKI ALTO (HA24)
 SUZUKI BALENO (EG)
 SUZUKI BALENO 2 volumi /Coda spiovente (EG)
 SUZUKI BALENO Station wagon (EG)

OE

3140055L00
 3140055L01
 3140055L02000
 3140059J00
 3140065D00
 3140065D01

Alternator Charge Current [A]: 70
 Belt Pulley [mm]: 55
 Clamp: M6 B+ [IG-L]
 Number of Ribs: 4
 Pulleys: with multi-belt pulley
 Voltage [V]: 12

AL-160JM

Alternator



FIAT DOBLO (119)
 FIAT PALIO (178BX)
 FIAT PALIO Weekend (178DX)
 FIAT PANDA (169)
 FIAT PUNTO (176)
 FIAT PUNTO (188)

OE

43420960
 46231693
 46407644
 46407647
 46419297
 46420960

Alternator Charge Current [A]: 75
 Belt Pulley [mm]: 60
 Clamp: M8
 Number of Ribs: 4
 Pulleys: with multi-belt pulley
 Voltage [V]: 12

AL-161JM

Alternator



CHEVROLET CRUZE (J300)
 CHEVROLET CRUZE 2 volumi /Coda spiovente (J305)
 CHEVROLET CRUZE Station Wagon (J308)
 CHEVROLET TRAX
 OPEL ASTRA GTC J

OE

1202117
 1202118
 1202261
 1202264
 1202328
 1202338

Alternator Charge Current [A]: 140
 Belt Pulley [mm]: 60
 Clamp: M8 B+ [DFM-RVC]
 Number of Ribs: 6
 Pulleys: with free-wheel belt pulley
 Voltage [V]: 14

Electrics
AL-162JM
Alternator


TOYOTA HILUX II Pick-up (RN6_, RN5_, LN6_, YN6_, YN5_, LN)
 TOYOTA HILUX III Pick-up (TGN1_, GGN2_, GGN1_, KUN2_, KUN)
 TOYOTA LAND CRUISER (KDJ12_, GRJ12_)
 TOYOTA LAND CRUISER 150 (KDJ15_, GRJ15_)

OE

270600L010
 270600L020
 270600L021
 270600L022
 270600L02284
 270600L030

Alternator Charge Current [A]: 100
 Belt Pulley [mm]: 58
 Clamp: M6 B+ [S-DFM-IG-L]
 Number of Ribs: 7
 Pulleys: with free-wheel belt pulley
 Voltage [V]: 14

AL-163JM
Alternator


ALFA ROMEO 145 (930)
 ALFA ROMEO 146 (930)
 ALFA ROMEO 155 (167)
 ALFA ROMEO 6 (119)
 ALFA ROMEO 75 (162B)
 ALFA ROMEO 90 (162)

OE

0005927867
 110073
 4423623
 46231700
 46231735
 46231740

Alternator Charge Current [A]: 65
 Belt Pulley [mm]: 62
 Clamp: M6,D+
 Number of Ribs: 5
 Pulleys: with multi-belt pulley
 Voltage [V]: 14

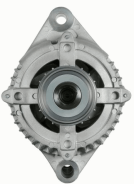
AL-164JM
Alternator


CHEVROLET CORSA Pick-up
 CHEVROLET CORSA Station wagon
 CHEVROLET CORSA Tre volumi
 HONDA CIVIC VII Hatchback (EU, EP, EV)
 OPEL ASTRA G 2 volumi /Coda spiovente (F48_, F08_)

OE

1204157
 1204158
 136101
 2506101
 31100PLZD00
 6204182

Alternator Charge Current [A]: 100
 Alternator Type: incl. vacuum pump
 Belt Pulley [mm]: 60
 Clamp: M8 B+ [L-W]
 Number of Ribs: 6
 Pulleys: with multi-belt pulley
 Voltage [V]: 14

AL-165JM
Alternator


ALFA ROMEO GIULIA (952_)
 ALFA ROMEO GIULIETTA (940)
 FIAT 500L
 FIAT 500X
 FIAT TIPO (356)
 FIAT TIPO 2 volumi /Coda spiovente (356_)

OE

51907673
 51929089
 71796431
 71796434

Alternator Charge Current [A]: 150
 Belt Pulley [mm]: 54
 Clamp: M8 B+ [LIN]
 Number of Ribs: 6
 Pulleys: with free-wheel belt pulley
 Voltage [V]: 14

AL-166JM
Alternator


MITSUBISHI CARISMA (DA_)
 MITSUBISHI CARISMA Tre volumi (DA_)
 MITSUBISHI SPACE STAR (DG_A)
 RENAULT AVANTIME (DE0_)
 RENAULT CLIO II (BB0/1/2_, CB0/1/2_)
 RENAULT LAGUNA I (B56_, 556_)

OE

1800A043
 2310000Q0A
 2310000Q0D
 2310000Q0E
 2310000Q0K
 2310000Q1F

Alternator Charge Current [A]: 120
 Belt Pulley [mm]: 49
 Clamp: M8 B+ [L-DFM]
 Number of Ribs: 6
 Pulleys: with free-wheel belt pulley
 Voltage [V]: 14

Electrics
AL-167JM
Alternator


CHRYSLER 300 C (LX)
 CHRYSLER 300 C Touring (LX)
 JEEP COMMANDER (XK)
 JEEP GRAND CHEROKEE III (WH, WK)
 MERCEDES-BENZ CLASSE C (W203)
 MERCEDES-BENZ CLASSE C (W204)

OE
 0009062700
 00090627000087
 000906270080
 000906270087
 04801250AA
 04801250AB

Alternator Charge Current [A]: 180
 Belt Pulley [mm]: 50
 Clamp: M8 B+ [LIN]
 Number of Ribs: 7
 Pulleys: with free-wheel belt pulley
 Voltage [V]: 12

AL-168JM
Alternator


ALFA ROMEO 145 (930)
 ALFA ROMEO 155 (167)
 FIAT BARCHETTA (183)
 FIAT BRAVA (182)
 FIAT BRAVO I (182)
 FIAT COUPE (FA/175)

OE
 0046430531
 1516426R
 46231670
 46231671
 46231722
 46231724

Alternator Charge Current [A]: 100
 Belt Pulley [mm]: 62
 Clamp: M8
 Number of Ribs: 6
 Pulleys: with multi-belt pulley
 Voltage [V]: 12

AL-169JM
Alternator


HYUNDAI ELANTRA Tre volumi (MD, UD)
 HYUNDAI i20
 HYUNDAI i20 (PB, PBT)
 HYUNDAI i30 (FD)
 HYUNDAI i30 (GD)
 HYUNDAI i30 Coupé

OE
 3730002A651
 373002A400
 373002A401
 373002A450
 373002A600
 373002A601

Alternator Charge Current [A]: 130
 Belt Pulley [mm]: 57
 Clamp: M8 B+ [C-L-FR]
 Number of Ribs: 5
 Pulleys: with free-wheel belt pulley
 Voltage [V]: 14

AL-170JM
Alternator


AUDI A2 (8Z0)
 SEAT ALHAMBRA (7V8, 7V9)
 SEAT ALTEA (5P1)
 SEAT ALTEA XL (5P5, 5P8)
 SEAT AROSA (6H)
 SEAT CORDOBA (6K2)

OE
 028903018RX
 028903026P
 0303903023N
 036903018B
 036903018BX
 036903024D

Alternator Charge Current [A]: 110
 Belt Pulley [mm]: 50
 Clamp: M8 B+ [L-DFM]
 Number of Ribs: 6
 Pulleys: with multi-belt pulley
 Voltage [V]: 12

AL-171JM
Alternator


HYUNDAI ELANTRA (XD)
 HYUNDAI ELANTRA Tre volumi (XD)
 HYUNDAI GRANDEUR (TG)
 HYUNDAI i30 (FD)
 HYUNDAI i30 CW (FD)
 HYUNDAI SANTA FÉ I (SM)

OE
 2730027012
 3730027010
 3730027011
 3730027012
 3730027012AT
 3730027013

Alternator Charge Current [A]: 120
 Alternator Type: incl. vacuum pump
 Belt Pulley [mm]: 60
 Clamp: M8 B+ [L-S]
 Number of Ribs: 6
 Pulleys: with free-wheel belt pulley
 Voltage [V]: 14

Electrics
AL-172JM
Alternator


FIAT 500 (312)
 FIAT 500 C (312)
 FIAT DOBLO (119)
 FIAT FIORINO MPV / Space wagon (225_)
 FIAT GRANDE PUNTO (199)
 FIAT IDEA

OE

1204432
 13117278
 13256930
 13283343
 1539098
 1571296

Alternator Charge Current [A]: 90
 Belt Pulley [mm]: 54
 Clamp: M8 B+M5 D+
 Number of Ribs: 6
 Pulleys: with multi-belt pulley
 Voltage [V]: 14

AL-173JM
Alternator


MINI MINI (R50, R53)

OE

12317790879
 2706033050
 2706033051
 7790879

Alternator Charge Current [A]: 100
 Belt Pulley [mm]: 60
 Clamp: M8 [C-FR-IG-L]
 Number of Ribs: 7
 Pulleys: with free-wheel belt pulley
 Voltage [V]: 12

AL-174JM
Alternator


ALFA ROMEO GT (937)
 CITROEN C5 I (DC_)
 CITROEN C5 I Break (DE_)
 CITROEN C8 (EA_, EB_)
 CITROEN XANTIA (X2)
 CITROEN XANTIA Break (X2)

OE

130722
 3140068D00
 3140068D00000
 3140068D01
 3140068D02
 3140068D02000

Alternator Charge Current [A]: 150
 Belt Pulley [mm]: 54
 Clamp: M8 B+ M5 D+
 Number of Ribs: 6
 Pulleys: with free-wheel belt pulley
 Voltage [V]: 14

AL-175JM
Alternator


TOYOTA YARIS (SCP1_, NLP1_, NCP1_)
 TOYOTA YARIS VERSO (_NLP2_, _NCP2_)

OE

2706033010
 2706033020
 2706033040

Alternator Charge Current [A]: 90
 Belt Pulley [mm]: 60
 Clamp: M6 [FR-IG-L]
 Number of Ribs: 5
 Pulleys: with free-wheel belt pulley
 Voltage [V]: 12

AL-176JM
Alternator


FIAT CROMA (194)
 FIAT GRANDE PUNTO (199)
 FIAT STILO (192)
 FIAT STILO Multi Wagon (192)
 OPEL ASTRA H (L48)
 OPEL ASTRA H GTC (L08)

OE

1204433
 13117340
 6204187
 6204293
 71755143
 75814308

Alternator Charge Current [A]: 105
 Belt Pulley [mm]: 62
 Clamp: M8 B+ M5 D+
 Number of Ribs: 6
 Pulleys: with free-wheel belt pulley
 Voltage [V]: 14

Electrics

AL-177JM

Alternator



FORD TRANSIT Autobus (FD_-, FB_-, FS_-, FZ_-, FC_-,
FORD TRANSIT Furgonato (FA_-,
FORD TRANSIT Pianale piatto/Telaio (FM_-, FN_-,
-))

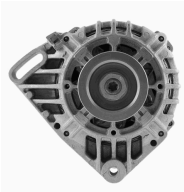
OE

1498518
1516508R
2C1T1 0300 BA
2C1T1 0300 BB
2C1T10300BA
2C1T10300BB

Alternator Charge Current [A]: 110
Belt Pulley [mm]: 59
Clamp: M6 B+ [L-DFM-S]
Number of Ribs: 7
Pulleys: with free-wheel belt pulley
Voltage [V]: 14

AL-178JM

Alternator



DACIA LOGAN (LS_-)
DACIA LOGAN II
DACIA LOGAN MCV II
DACIA SANDERO
DACIA SANDERO II
RENAULT CLIO II (BB0/1/2_-, CB0/1/2_-)

OE

130712
2310000G1H
2310000GAT
2310000Q1C
2310000Q1D
2310000Q1H

Alternator Charge Current [A]: 95
Belt Pulley [mm]: 65
Clamp: M8 B+[L]
Number of Ribs: 3
Pulleys: with multi-belt pulley
Voltage [V]: 14

AL-179JM

Alternator



HYUNDAI GALLOPER I
HYUNDAI GALLOPER II (JK-01)
HYUNDAI TERRACAN (HP)
MITSUBISHI GALLOPER (JK-01)

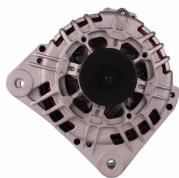
OE

3730042540
3730042542
3730042860
3730042861
3730042862
3730042863

Alternator Charge Current [A]: 90
Alternator Type: incl. vacuum pump
Belt Pulley [mm]: 76
Clamp: M6 B+ [L-S]
Number of Ribs: 2
Pulleys: Without multi-belt pulley
Voltage [V]: 14

AL-180JM

Alternator



DACIA LOGAN (LS_-)
DACIA LOGAN MCV (KS_-)
DACIA LOGAN Pick-up (US_-)
DACIA SANDERO
RENAULT CLIO IV
RENAULT KANGOO (KC0/1_-)

OE

1204189
1204489
2310000QAU
2310000QBE
2310000QBG
2310000QOE

Alternator Charge Current [A]: 125
Belt Pulley [mm]: 54
Clamp: M8 B+[L]
Number of Ribs: 5
Pulleys: with free-wheel belt pulley
Voltage [V]: 12

AL-181JM

Alternator



TOYOTA YARIS (SCP1_-, NLP1_-, NCP1_-)
TOYOTA YARIS VERSO (_NLP2_-, _NCP2_-)

OE

270600J010
270600J020
270600J030
270600J040
2706023040
270600J020

Alternator Charge Current [A]: 90
Belt Pulley [mm]: 55
Clamp: M6 [FR-IG-L]
Number of Ribs: 6
Pulleys: with multi-belt pulley
Voltage [V]: 12

Electrics
AL-182JM
Alternator


TOYOTA AVENSIS (T25_)
 TOYOTA AVENSIS Station wagon (T25)
 TOYOTA AVENSIS Tre volumi (T25)
 TOYOTA COROLLA (ZZE12_, NDE12_, ZDE12_)
 TOYOTA COROLLA (_E11_)
 TOYOTA COROLLA Compact (_E11_)

OE
 2706027040
 270602704084
 2706027050
 2706027060
 2706027070
 2706027090

Alternator Charge Current [A]: 130
 Belt Pulley [mm]: 58
 Clamp: M6 B+ [S-DFM-IG-L]
 Number of Ribs: 5
 Pulleys: with free-wheel belt pulley
 Voltage [V]: 14

AL-183JM
Alternator


FORD MAVERICK (UDS, UNS)
 NISSAN TERRANO II (R20)

OE
 1959007
 2310069T60
 231007F000
 231007F001

Alternator Charge Current [A]: 80
 Belt Pulley [mm]: 80
 Clamp: M8
 Number of Ribs: 1
 Pulleys: Without multi-belt pulley
 Voltage [V]: 12

AL-184JM
Alternator


DACIA LOGAN (LS_)
 DACIA LOGAN MCV (KS_)
 DACIA LOGAN Pick-up (US_)
 DACIA SANDERO
 RENAULT CLIO II (BB0/1/2_, CB0/1/2_)
 RENAULT ESPACE III (JE0_)

OE
 2310000QBC
 27060165FL
 6001548061
 6601548061
 7700101274
 7700421477

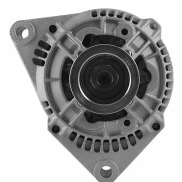
Alternator Charge Current [A]: 98
 Belt Pulley [mm]: 55
 Clamp: M8 B+ [L-DFM]
 Number of Ribs: 6
 Pulleys: with multi-belt pulley
 Voltage [V]: 14

AL-185JM
Alternator


CITROEN AX (ZA_)
 CITROEN SAXO (S0, S1)
 CITROEN XSARA (N1)
 CITROEN XSARA Break (N2)
 CITROEN ZX Break (N2)
 NISSAN MICRA II (K11)

OE
 12312244818
 12312244819
 130555
 5701A5
 5701A6
 5701A6(X)

Alternator Charge Current [A]: 95
 Belt Pulley [mm]: 55
 Clamp: M8
 Number of Ribs: 5
 Pulleys: with multi-belt pulley
 Voltage [V]: 12

AL-186JM
Alternator


DAEWOO KORANDO (KJ)
 DAEWOO KORANDO Cabrio (KJ)
 DAEWOO MUSSO (FJ)
 MERCEDES-BENZ 190 (W201)
 MERCEDES-BENZ CLASSE C (W202)
 MERCEDES-BENZ CLASSE C Station wagon

OE
 0081545102
 0081545202
 008154520280
 0081549602
 008154960280
 0081549702

Alternator Charge Current [A]: 90
 Belt Pulley [mm]: 55
 Clamp: M8 B+ M5 D+
 Number of Ribs: 6
 Pulleys: with multi-belt pulley
 Voltage [V]: 14

Electrics
AL-187JM
Alternator


AUDI A3 Cabriolet (8P7)
 AUDI A4 (8EC, B7)
 AUDI A4 Avant (8ED, B7)
 CHRYSLER SEBRING (JS)
 CHRYSLER SEBRING Cabriolet (JS)
 DODGE AVENGER

OE

021903026
 021903026A
 021903026B
 021903026G
 021903026GX
 021903026L

Alternator Charge Current [A]: 180
 Belt Pulley [mm]: 56
 Clamp: M8 B+ [L-DFM]
 Number of Ribs: 6
 Pulleys: with free-wheel belt pulley
 Voltage [V]: 14

AL-188JM
Alternator


FORD SCORPIO II (GFR, GGR)
 FORD SCORPIO II Station wagon (GNR, GGR)

OE

1406060
 1406068
 1406091
 1406105
 1516401R
 1668894

Alternator Charge Current [A]: 70
 Alternator Type: incl. vacuum pump
 Belt Pulley [mm]: 67
 Clamp: M6 B+, M5 D+ M5 W
 Number of Ribs: 4
 Pulleys: with multi-belt pulley
 Voltage [V]: 14

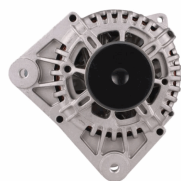
AL-189JM
Alternator


ALFA ROMEO GIULIETTA (940)
 FIAT 500L
 FIAT 500X
 FIAT TIPO (356)
 FIAT TIPO 2 volumi /Coda spiovente (356_)
 FIAT TIPO Station wagon (356_)

OE

52067418
 52083172
 55280473
 68348758AB
 71798219
 K68348758AB

Alternator Charge Current [A]: 180
 Belt Pulley [mm]: 54
 Clamp: M8 B+ [LIN]
 Number of Ribs: 6
 Pulleys: with free-wheel belt pulley
 Voltage [V]: 14

AL-190JM
Alternator


DACIA DUSTER
 DACIA LOGAN (LS_)
 DACIA LOGAN MCV (KS_)
 DACIA LOGAN Pick-up (US_)
 DACIA SANDERO
 NISSAN MICRA III (K12)

OE

2310000Q2C
 2310000Q2R
 7711368356
 8200386806
 8200667608

Alternator Charge Current [A]: 110
 Belt Pulley [mm]: 55
 Clamp: M8 B+ [L-DFM]
 Number of Ribs: 6
 Pulleys: with free-wheel belt pulley
 Voltage [V]: 14

AL-191JM
Alternator


CHEVROLET CAPTIVA (C100, C140)
 CHEVROLET EPICA (KL1_)
 CHEVROLET LACETTI (J200)
 CHEVROLET LACETTI Station wagon (J200)
 CHEVROLET NUBIRA Station wagon
 CHEVROLET NUBIRA Tre volumi

OE

1202430
 1202485
 4805450
 4811550
 4817806
 95519920

Alternator Charge Current [A]: 120
 Belt Pulley [mm]: 56
 Clamp: M8 B+, F-L
 Number of Ribs: 6
 Pulleys: with free-wheel belt pulley
 Voltage [V]: 14

Electrics
AL-192JM
Alternator


TOYOTA YARIS (SCP9_, NSP9_, KSP9_, NCP9_, ZSP9_)

OE
 270600N011

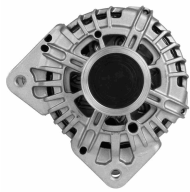
 Alternator Charge Current [A]: 90
 Belt Pulley [mm]: 62
 Clamp: M6 B+ [S-DFM-IG-L]
 Number of Ribs: 6
 Pulleys: with free-wheel belt pulley
 Voltage [V]: 14

AL-193JM
Alternator


TOYOTA YARIS (SCP9_, NSP9_, KSP9_, NCP9_, ZSP9_)

OE
 270600Q030
 270600Q040
 2706040010
 2706040020

 Alternator Charge Current [A]: 90
 Belt Pulley [mm]: 57
 Clamp: M6 B+ [S-DFM-IG-L]
 Number of Ribs: 6
 Pulleys: with multi-belt pulley
 Voltage [V]: 14

AL-194JM
Alternator

 NISSAN ALMERA II (N16)
 NISSAN ALMERA II Hatchback (N16)
 NISSAN MICRA III (K12)
 RENAULT CLIO II (BB0/1/2_, CB0/1/2_)
 RENAULT GRAND SCÉNIC II (JM0/1_)
 RENAULT KANGOO (KC0/1_)

OE
 2310000QAB
 2310000QBB
 2310000QBJ
 2310000QBK
 231006313R
 23100BN701

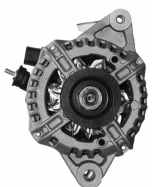
 Alternator Charge Current [A]: 150
 Belt Pulley [mm]: 54
 Clamp: M8 B+ [L-DFM]
 Number of Ribs: 5
 Pulleys: with free-wheel belt pulley
 Voltage [V]: 14

AL-195JM
Alternator


TOYOTA YARIS (NHP13_, NSP13_, NCP13_, KSP13_, NLP13_)

OE
 270600Q140
 2706040090

 Alternator Charge Current [A]: 90
 Belt Pulley [mm]: 60
 Clamp: M6 B+ [LIN]
 Number of Ribs: 6
 Pulleys: with multi-belt pulley
 Voltage [V]: 14

AL-196JM
Alternator

 TOYOTA BELTA
 TOYOTA VIOS/YARIS Tre volumi (ZSP9_, NCP9_)
 TOYOTA YARIS (SCP9_, NSP9_, KSP9_, NCP9_, ZSP9_)

OE
 270600J051
 270600J061
 270600J070

 Alternator Charge Current [A]: 90
 Belt Pulley [mm]: 55
 Clamp: M6 B+ [S-DFM-IG-L]
 Number of Ribs: 6
 Pulleys: with multi-belt pulley
 Voltage [V]: 14

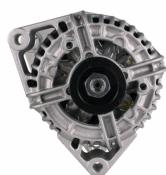
Electrics
AL-197JM
Alternator


AUDI A4 (8D2, B5)
 AUDI A4 (8E2, B6)
 AUDI A4 Avant (8D5, B5)
 AUDI A4 Avant (8E5, B6)
 AUDI A6 (4B2, C5)
 AUDI A6 Avant (4B5, C5)

OE

028903018K
 028903029B
 028903029BX
 028903029C
 028903029E
 028903029EX

Alternator Charge Current [A]: 140
 Belt Pulley [mm]: 56
 Clamp: M8 B+ [L-DFM]
 Number of Ribs: 5
 Pulleys: with free-wheel belt pulley
 Voltage [V]: 12

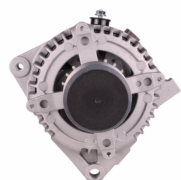
AL-198JM
Alternator


OPEL ASTRA G 2 volumi /Coda spiovente (F48_, F08_)
 OPEL ASTRA G Cabriolet (F67)
 OPEL ASTRA G Coupe (F07_)
 OPEL ASTRA G Station wagon (F35_)
 OPEL ASTRA G Tre volumi (F69_)

OE

074903025J
 09133601
 10457917
 1204134
 1204160
 13108596

Alternator Charge Current [A]: 140
 Belt Pulley [mm]: 50
 Clamp: M8 B+ M5 D+
 Number of Ribs: 6
 Pulleys: with multi-belt pulley
 Voltage [V]: 14

AL-199JM
Alternator


TOYOTA AURIS (NRE15_, ZZE15_, ADE15_, ZRE15_, NDE15_)
 TOYOTA COROLLA Tre volumi (E15_)
 TOYOTA URBAN CRUISER (NSP1_, NLP1_, ZSP1_, NCP11_)
 TOYOTA YARIS (SCP9_, NSP9_, KSP9_, NCP9_)

OE

270600N040
 270600N050
 2706033100

Alternator Charge Current [A]: 100
 Belt Pulley [mm]: 58
 Clamp: M6 B+ [RLO-DFM-IG-L]
 Number of Ribs: 6
 Pulleys: with free-wheel belt pulley
 Voltage [V]: 14

AL-200JM
Alternator


OPEL ASTRA H (L48)
 OPEL ASTRA H GTC (L08)
 OPEL ASTRA H Station wagon (L35)
 OPEL ASTRA H TwinTop (L67)
 OPEL SIGNUM
 OPEL VECTRA C

OE

1202115
 1202116
 1204422
 1204427
 13229990
 13229991

Alternator Charge Current [A]: 140
 Belt Pulley [mm]: 54
 Clamp: M8 B+ [DFM-L]
 Number of Ribs: 6
 Pulleys: with free-wheel belt pulley
 Voltage [V]: 14

AL-201JM
Alternator


FORD B-MAX (JK)
 FORD C-MAX II
 FORD ECOSPORT
 FORD FIESTA Tre volumi
 FORD FIESTA VI
 FORD FOCUS III

OE

1469714
 1685794
 1698214
 1871861
 1928875
 2119650

Alternator Charge Current [A]: 120
 Belt Pulley [mm]: 49
 Clamp: M8 B+ [LIN]
 Number of Ribs: 6
 Pulleys: with multi-belt pulley
 Voltage [V]: 14

Electrics
AL-202JM
Alternator


CITROEN BERLINGO (MF)
 CITROEN C5 I (DC_)
 CITROEN C5 I Break (DE_)
 CITROEN C8 (EA_, EB_)
 CITROEN EVASION (22, U6)
 CITROEN XANTIA (X2)

OE
 06C903016B
 06C903016BX
 078903016S
 1516481R
 570520
 57052D

Alternator Charge Current [A]: 150
 Belt Pulley [mm]: 54
 Clamp: M8 B+ M5 D+
 Number of Ribs: 6
 Pulleys: with multi-belt pulley
 Voltage [V]: 14

AL-203JM
Alternator


FORD FIESTA V (JH_, JD_)
 FORD FUSION (JU_)
 MAZDA 2 (DY)

OE
 1140136
 1485762
 1519795
 1760757
 2S6T10300BA
 2S6T10300BB

Alternator Charge Current [A]: 150
 Belt Pulley [mm]: 54
 Clamp: M8 B+ [FR-SIG-A]
 Number of Ribs: 6
 Pulleys: with free-wheel belt pulley
 Voltage [V]: 14

AL-204JM
Alternator


FORD C-MAX (DM2)
 FORD FIESTA V (JH_, JD_)
 FORD FOCUS (DAW, DBW)
 FORD FOCUS C-MAX
 FORD FOCUS II (DA_)
 FORD FOCUS II Cabriolet

OE
 1064383
 1070806
 1073090
 1090084
 1090085
 1097305

Alternator Charge Current [A]: 105
 Belt Pulley [mm]: 48
 Clamp: M8 B+ [FR-SIG-A]
 Number of Ribs: 6
 Pulleys: with multi-belt pulley
 Voltage [V]: 14

AL-205JM
Alternator


CITROEN BERLINGO (MF)
 CITROEN EVASION (22, U6)
 CITROEN XANTIA (X1)
 CITROEN XANTIA Break (X1)
 CITROEN XM (Y4)
 CITROEN XM Break (Y4)

OE
 1516404R
 1516411R
 1516417R
 3140065G00
 3140065G00000
 3292554

Alternator Charge Current [A]: 120
 Belt Pulley [mm]: 61
 Clamp: M8
 Number of Ribs: 6
 Pulleys: with multi-belt pulley
 Voltage [V]: 12

AL-206JM
Alternator


CITROEN BERLINGO (B9)
 CITROEN C3 II
 CITROEN C3 Picasso
 CITROEN C4 Coupé (LA_)
 CITROEN C4 Grand Picasso I (UA_)
 CITROEN C4 Grand Picasso II

OE
 12317535098
 12317553009
 12317562388
 12317574365
 12317575650
 12317575779

Alternator Charge Current [A]: 150
 Belt Pulley [mm]: 49
 Clamp: M6 B+ [BSS]
 Number of Ribs: 6
 Pulleys: with free-wheel belt pulley
 Voltage [V]: 14

Electrics
AL-207JM
Alternator


OPEL ASTRA G 2 volumi /Coda spiovente (F48_, F08_)
 OPEL ASTRA G Cabriolet (F67)
 OPEL ASTRA G CLASSIC (T98)
 OPEL ASTRA G CLASSIC Caravan (F35)
 OPEL ASTRA G CLASSIC Tre volumi (T98)

OE

1204108
 1204121
 13125229
 13147093
 13156050
 13156054

Alternator Charge Current [A]: 120
 Belt Pulley [mm]: 54
 Clamp: M8
 Number of Ribs: 5
 Pulleys: with multi-belt pulley
 Voltage [V]: 12

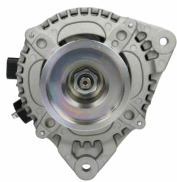
AL-208JM
Alternator


DACIA DOKKER
 DACIA DUSTER
 DACIA LODGY
 DACIA LOGAN II
 DACIA LOGAN MCV II
 DACIA SANDERO II

OE

2310007865A
 2310007865R
 231001318R
 231003424R
 231007865R
 231007865RA

Alternator Charge Current [A]: 120
 Belt Pulley [mm]: 55
 Clamp: M8 B+ [LIN]
 Number of Ribs: 6
 Pulleys: with free-wheel belt pulley
 Voltage [V]: 14

AL-209JM
Alternator


FORD C-MAX (DM2)
 FORD FOCUS C-MAX
 FORD FOCUS II (DA_)
 FORD FOCUS II Station wagon (DA_)
 FORD FOCUS II Tre volumi (DA_)

OE

1302007
 132974
 1352425
 1352431
 1477740
 1677167

Alternator Charge Current [A]: 150
 Belt Pulley [mm]: 78
 Clamp: M8 B+ [FR-SIG-A]
 Pulleys: Without multi-belt pulley
 Voltage [V]: 14

AL-210JM
Alternator


CITROEN BERLINGO (B9)
 CITROEN C-CROSSER (EP_)
 CITROEN C4 Coupé (LA_)
 CITROEN C4 Grand Picasso I (UA_)
 CITROEN C4 I (LC_)
 CITROEN C4 Picasso I (UD_)

OE

1800A138
 56547528ON80
 570200
 5702000
 5702E2
 5702E3

Alternator Charge Current [A]: 180
 Belt Pulley [mm]: 54
 Clamp: M8 B+ [L-DFM]
 Number of Ribs: 6
 Pulleys: with free-wheel belt pulley
 Voltage [V]: 14

AL-211JM
Alternator


FIAT BRAVA (182)
 FIAT BRAVO I (182)
 FIAT PALIO (178BX)
 FIAT PALIO Weekend (178DX)
 FIAT PUNTO (176)
 FIAT SIENA (178_)

OE

46000357
 46231699
 46407645
 46420961
 46420964
 46420965

Alternator Charge Current [A]: 85
 Belt Pulley [mm]: 60
 Clamp: M8
 Number of Ribs: 6
 Pulleys: with multi-belt pulley
 Voltage [V]: 12

Electrics
AL-212JM
Alternator


MERCEDES-BENZ CLASSE C (W204)
 MERCEDES-BENZ CLASSE C Coupé (C204)
 MERCEDES-BENZ CLASSE C T-Model (S204)
 MERCEDES-BENZ CLASSE E (W212)
 MERCEDES-BENZ CLASSE E Cabriolet (A207)
 MERCEDES-BENZ CLASSE E Coupé (C207)

OE
 0009063622
 0009068802
 000906880280
 0131546802
 01315468020
 01315468020080

Alternator Charge Current [A]: 180
 Belt Pulley [mm]: 50
 Clamp: M8 B+ [LIN]
 Number of Ribs: 6
 Pulleys: with free-wheel belt pulley
 Voltage [V]: 14

AL-213JM
Alternator


OPEL ASTRA GTC J
 OPEL ASTRA J
 OPEL ASTRA J Sports Tourer
 OPEL INSIGNIA
 OPEL INSIGNIA A Country Tourer (G09)
 OPEL INSIGNIA Station wagon

OE
 1202236
 1202423
 1204643
 95519835

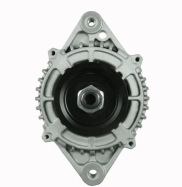
Alternator Charge Current [A]: 100
 Belt Pulley [mm]: 54
 Clamp: M8 B+ [F-L]
 Number of Ribs: 6
 Pulleys: with free-wheel belt pulley
 Voltage [V]: 14

AL-214JM
Alternator


BMW 3 (E90)
 BMW 3 Cabriolet (E93)
 BMW 3 Coupé (E92)
 BMW 3 Touring (E91)
 BMW 5 (E60)
 BMW 5 Touring (E61)

OE
 12317788821
 12317789981
 12317789984
 12317792072
 12317797521
 12317797522

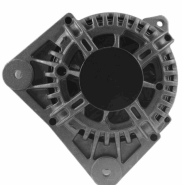
Alternator Charge Current [A]: 170
 Belt Pulley [mm]: 53
 Clamp: M6 B+ [COM-BSS]
 Number of Ribs: 6
 Pulleys: with multi-belt pulley
 Voltage [V]: 14

AL-215JM
Alternator


CHEVROLET MATIZ (M200, M250)
 DAEWOO MATIZ

OE
 AB165104

Alternator Charge Current [A]: 65
 Belt Pulley [mm]: 64
 Clamp: M6 B [IG-L]
 Number of Ribs: 3
 Pulleys: with multi-belt pulley
 Voltage [V]: 14

AL-216JM
Alternator


PEUGEOT 308 (4A_, 4C_)
 RENAULT GRAND SCÉNIC II (JM0/1_)
 RENAULT KANGOO (KC0/1_)
 RENAULT KANGOO / GRAND KANGOO (KW0/1_)
 RENAULT KANGOO BE BOP (KW0/1_)
 RENAULT MEGANE II (BM0/1_, CM0/1_)

OE
 231008578R
 7701475896
 7701476812
 7711368380
 7711368719
 8200390675

Alternator Charge Current [A]: 100
 Belt Pulley [mm]: 55
 Clamp: M6 B+ [BSS]
 Number of Ribs: 6
 Pulleys: with free-wheel belt pulley
 Voltage [V]: 14

Electrics
AL-217JM
Alternator


AUDI A6 (4F2, C6)
 AUDI A6 Allroad (4FH, C6)
 AUDI A6 Avant (4F5, C6)
 AUDI A8 (4E_)
 AUDI Q7 (4L)
 VW TOUAREG (7LA, 7L6, 7L7)

OE

059903015R
 059903015RX
 059903017K
 059903017KX
 06C903016H
 06C903016HX

Alternator Charge Current [A]: 180
 Belt Pulley [mm]: 57
 Clamp: M6 B+ [COM-BSS]
 Number of Ribs: 6
 Pulleys: with multi-belt pulley
 Voltage [V]: 14

AL-218JM
Alternator


SMART CABRIO (450)
 SMART CITY-COUPE (450)
 SMART FORTWO Cabrio (450)
 SMART FORTWO Coupé (450)

OE

0004717V005
 0004717V005000000
 0004717V006
 0111548002
 011154800280
 4717V00500

Alternator Charge Current [A]: 85
 Belt Pulley [mm]: 53
 Clamp: M8 B+ [L-DFM]
 Number of Ribs: 5
 Pulleys: with multi-belt pulley
 Voltage [V]: 14

AL-219JM
Alternator


AUDI A1 (8X1, 8XF)
 AUDI A1 Sportback (8XA, 8XK)
 AUDI A3 (8P1)
 AUDI A3 Cabriolet (8P7)
 AUDI A3 Sportback (8PA)
 AUDI Q3 (8U)

OE

03L903023
 03L903023A
 03L903023AX
 03L903023X
 03L903024
 03L903024M

Alternator Charge Current [A]: 140
 Belt Pulley [mm]: 56
 Clamp: M8 B+ [LIN]
 Number of Ribs: 6
 Pulleys: with free-wheel belt pulley
 Voltage [V]: 14

AL-220JM
Alternator


SUZUKI JIMNY (FJ)

OE

3140084A10
 3140084A10000
 3140084A11
 3140084A11000
 3140084A12
 3140084A12000

Alternator Charge Current [A]: 100
 Alternator Type: incl. vacuum pump
 Belt Pulley [mm]: 54
 Clamp: M8 B+ [L-R]
 Number of Ribs: 6
 Pulleys: with free-wheel belt pulley
 Voltage [V]: 14

AL-221JM
Alternator


HYUNDAI ACCENT III (MC)
 HYUNDAI ACCENT III Tre volumi (MC)
 HYUNDAI ACCENT IV Tre volumi (RB)
 HYUNDAI GETZ (TB)
 HYUNDAI i10 (PA)
 HYUNDAI i20

OE

373002A000
 373002A010
 373002A011
 373002A050
 373002A100
 373002A110

Alternator Charge Current [A]: 120
 Belt Pulley [mm]: 57
 Clamp: M8 B+ [L]
 Number of Ribs: 5
 Pulleys: with free-wheel belt pulley
 Voltage [V]: 14

Electrics
AL-222JM
Alternator


PIAGGIO QUARGO Pianale piatto/Telaio

OE
 1157326
 1157397
 1758064010
 JFZ155A

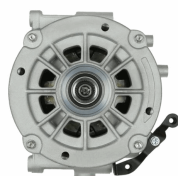
 Alternator Charge Current [A]: 40
 Belt Pulley [mm]: 63
 Clamp: M6 [IG-L]
 Number of Ribs: 1
 Pulleys: Without multi-belt pulley
 Voltage [V]: 12

AL-223JM
Alternator

 OPEL ASTRA CLASSIC (L48)
 OPEL ASTRA CLASSIC Station wagon
 OPEL ASTRA CLASSIC Tre volumi
 OPEL ASTRA H (L48)
 OPEL ASTRA H GTC (L08)
 OPEL ASTRA H Station wagon (L35)

OE
 1202424
 1204197
 1204424
 1204425
 1207197
 6204274

 Alternator Charge Current [A]: 140
 Belt Pulley [mm]: 60
 Clamp: M8 B+ [F-L]
 Number of Ribs: 6
 Pulleys: with free-wheel belt pulley
 Voltage [V]: 14

AL-224JM
Alternator

 MERCEDES-BENZ CLASSE C (W203)
 MERCEDES-BENZ CLASSE C Coupe (CL203)
 MERCEDES-BENZ CLASSE C T-Model (S203)
 MERCEDES-BENZ CLASSE E (W210)
 MERCEDES-BENZ CLASSE E Station wagon (S210)

OE
 00011501750
 00011502550
 0001501750
 0001502450
 0001502550
 A00011502550

 Alternator Charge Current [A]: 190
 Belt Pulley [mm]: 50
 Clamp: M8 B+ [L-DFM]
 Number of Ribs: 6
 Pulleys: with free-wheel belt pulley
 Voltage [V]: 12

AL-225JM
Alternator

 FORD FOCUS (DAW, DBW)
 FORD FOCUS Station wagon (DNW)
 FORD FOCUS Tre volumi (DFW)
 FORD TOURNEO CONNECT

OE
 1229421
 1376671
 1376672
 1376695
 1429688
 1429689

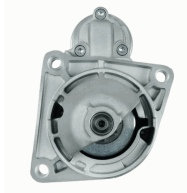
 Alternator Charge Current [A]: 120
 Belt Pulley [mm]: 78,5
 Clamp: M6 + [S-SIG-FR]
 Pulleys: Without multi-belt pulley
 Voltage [V]: 14

AL-226JM
Alternator

 MERCEDES-BENZ CLASSE A (W168)
 MERCEDES-BENZ Vaneo (414)

OE
 0101543802
 010154380280
 0111543502
 011154350280
 0111545602
 011154560280

 Alternator Charge Current [A]: 90
 Belt Pulley [mm]: 51
 Clamp: M8 B+M5 D+
 Number of Ribs: 5
 Pulleys: with multi-belt pulley
 Voltage [V]: 14

Electrics
MT-101JM
Starter


ALFA ROMEO 145 (930)
 ALFA ROMEO 146 (930)
 ALFA ROMEO 147 (937)
 ALFA ROMEO 156 (932)
 ALFA ROMEO 156 Sportwagon (932)
 ALFA ROMEO 159 (939)

OE
 1202282
 3110079J00
 3110079J00000
 31100H79J00
 31100H79J00000
 31100T79J00

Clamp: Pin "30" M8 B+
 Clamp: Pin "50" M6
 Flange [mm]: 81,5
 Number of mounting bores: 3
 Number of Teeth: 9
 Number of Thread Bores: 0
 Rated Power [kW]: 2
 Rotation Direction: Clockwise rotation
 Voltage [V]: 12

MT-102JM
Starter


ALFA ROMEO MITO (955)
 CITROEN NEMO Station wagon
 FIAT 500 (312)
 FIAT 500 C (312)
 FIAT DOBLO (119)
 FIAT FIORINO MPV / Space wagon (225_)

OE
 09115193
 1202265
 1202499
 1571299
 1637179980
 1726349

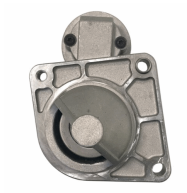
Clamp: M8 B+
 Flange [mm]: 64
 Number of mounting bores: 2
 Number of Teeth: 9
 Number of Thread Bores: 1
 Rated Power [kW]: 1,3
 Rotation Direction: Clockwise rotation
 Voltage [V]: 12

MT-103JM
Starter


ABARTH 124 Spider (348_)
 ABARTH 500 (312)
 ABARTH 500C (312)
 ABARTH PUNTO EVO (199)
 ALFA ROMEO GIULIETTA (940)
 ALFA ROMEO MITO (955)

OE
 1202291
 1202503
 136908
 1542468
 1567033
 1726802

Clamp: M8 B+
 Flange [mm]: 64
 Number of mounting bores: 3
 Number of Teeth: 10
 Number of Teeth: 8
 Number of Teeth: 9
 Number of Thread Bores: 1
 Rated Power [kW]: 1
 Rotation Direction: Clockwise rotation
 Voltage [V]: 12

MT-104JM
Starter


FIAT PALIO (178BX)
 FIAT PALIO Weekend (178DX)
 FIAT PUNTO (188)
 FIAT SEICENTO (187)
 FIAT SIENA (178_)
 LANCIA Y (840A)

OE
 136910
 2506910
 46429594
 46473785
 46518059
 46548653

Clamp: M8, Pin "50" M6
 Flange [mm]: 64
 Number of mounting bores: 3
 Number of Teeth: 10
 Number of Teeth: 8
 Number of Teeth: 9
 Number of Thread Bores: 1
 Rated Power [kW]: 0,8
 Rotation Direction: Clockwise rotation
 Voltage [V]: 12

MT-105JM
Starter


DACIA LOGAN (LS_)
 DACIA LOGAN II
 DACIA LOGAN MCV (KS_)
 DACIA LOGAN MCV II
 DACIA LOGAN Pick-up (US_)
 DACIA SANDERO

OE
 2330000Q0F
 2330000Q1H
 2330000Q1M
 2330000Q2C
 2330000Q6L
 2330000QA0

Clamp: M8 B+, Pin "50" Plug
 Flange [mm]: 63
 Number of mounting bores: 3
 Number of Teeth: 10
 Number of Teeth: 12
 Number of Teeth: 13
 Number of Thread Bores: 3
 Rated Power [kW]: 1,4
 Rotation Direction: Clockwise rotation
 Voltage [V]: 12

Electrics
MT-106JM
Starter

 IVECO MASSIF Pick-up
 IVECO MASSIF Station Wagon

OE

 1516689R
 2994100
 2995990
 2997002
 42498717
 500059592

 Clamp: M8, Pin "50" M6
 Flange [mm]: 81,5
 Number of mounting bores: 3
 Number of Teeth: 9
 Number of Thread Bores: 3
 Rated Power [kW]: 2,3
 Rotation Direction: Clockwise rotation
 Voltage [V]: 12

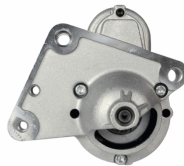
MT-107JM
Starter

 FORD FIESTA V (JH_, JD_)
 FORD FIESTA VI
 FORD FUSION (JU_)
 MAZDA 2 (DY)

OE

 1140757
 1144505
 1350459
 1366195
 1368974
 1483817

 Clamp: M8, Pin "50" M6
 Number of mounting bores: 3
 Number of Teeth: 12
 Number of Thread Bores: 2
 Rated Power [kW]: 1,4
 Rotation Direction: Clockwise rotation
 Voltage [V]: 12

MT-108JM
Starter

 CITROEN BERLINGO (B9)
 CITROEN BERLINGO (K9)
 CITROEN BERLINGO (MF)
 CITROEN C-ELYSEE
 CITROEN C1 (PM_, PN_)
 CITROEN C2 (JM_)

OE

 1213257
 1638115880
 28100YV010
 28100YV011
 3640319
 5802A2

 Clamp: Pin "30" M8 B+
 Clamp: Pin "50" M5
 Number of mounting bores: 4
 Number of Teeth: 11
 Number of Teeth: 12
 Number of Thread Bores: 2
 Rated Power [kW]: 1,4
 Rotation Direction: Clockwise rotation
 Voltage [V]: 12

MT-109JM
Starter

 CITROEN JUMPER Autobus
 CITROEN JUMPER Autobus (230P)
 CITROEN JUMPER Autobus (244, Z_)
 CITROEN JUMPER Furgonato
 CITROEN JUMPER Furgonato (230L)
 CITROEN JUMPER Furgonato (244)

OE

 130019808
 1300198080
 131955508
 1329201080
 1349920080
 1516685R

 Clamp: M8, Pin "50" M6
 Flange [mm]: 81,5
 Number of mounting bores: 3
 Number of Teeth: 9
 Number of Thread Bores: 3
 Rated Power [kW]: 2,5
 Rotation Direction: Clockwise rotation
 Voltage [V]: 12

MT-110JM
Starter

 CITROEN JUMPER Autobus (230P)
 CITROEN JUMPER Autobus (244, Z_)
 CITROEN JUMPER Furgonato (230L)
 CITROEN JUMPER Furgonato (244)
 CITROEN JUMPER Pianale piatto/Telaio (230)
 CITROEN JUMPER Pianale piatto/Telaio (244)

OE

 1319555080
 1331329080
 134705808
 1347058080
 134705880
 1524014R

 Clamp: M8
 Flange [mm]: 82
 Number of mounting bores: 3
 Number of Teeth: 9
 Number of Thread Bores: 3
 Rated Power [kW]: 2,5
 Rotation Direction: Clockwise rotation
 Voltage [V]: 12

Electrics
MT-111JM
Starter


CITROEN BERLINGO (MF)
 CITROEN BX (XB-_)
 CITROEN BX Break (XB-_)
 CITROEN C-CROSSER (EP-)
 CITROEN C15 Station wagon
 CITROEN C4 Coupé (LA-)

OE

1320921080
 1332419080
 1502453001E
 151412580
 1516680R
 1516741R

Clamp: Pin "30" M8 B+
 Clamp: Pin "50" M5
 Number of mounting bores: 3
 Number of Teeth: 11
 Number of Thread Bores: 2
 Rated Power [kW]: 1,9
 Rotation Direction: Clockwise rotation
 Voltage [V]: 12

MT-112JM
Starter


CITROEN BERLINGO (MF)
 CITROEN BX (XB-_)
 CITROEN BX Break (XB-_)
 CITROEN C-CROSSER (EP-)
 CITROEN C15 Station wagon
 CITROEN C4 Coupé (LA-)

OE

1005831356
 1319121080
 1342792080
 1516776R
 1516779R
 1810A101

Clamp: M8, Pin "50" M5
 Flange [mm]: 66
 Number of mounting bores: 3
 Number of Teeth: 10
 Number of Teeth: 11
 Number of Teeth: 12
 Number of Teeth: 13
 Number of Thread Bores: 3
 Rated Power [kW]: 1,4
 Rotation Direction: Clockwise rotation
 Voltage [V]: 12

MT-113JM
Starter


MERCEDES-BENZ CLASSE C (W202)
 MERCEDES-BENZ CLASSE C (W203)
 MERCEDES-BENZ CLASSE C Coupe (CL203)
 MERCEDES-BENZ CLASSE C Station wagon (S202)
 MERCEDES-BENZ CLASSE C T-Model (S203)

OE

0031515001
 003151500180
 0041512101
 0041513001
 0041513901
 0041514501

Clamp: M8
 Flange [mm]: 82,5
 Number of mounting bores: 2
 Number of Teeth: 10
 Number of Thread Bores: 2
 Rated Power [kW]: 2
 Rotation Direction: Clockwise rotation
 Voltage [V]: 12

MT-114JM
Starter


FORD FIESTA IV (JA-, JB-)
 FORD FOCUS (DAW, DBW)
 FORD FOCUS Station wagon (DNW)
 FORD FOCUS Tre volumi (DFW)
 FORD PUMA (EC-)
 MAZDA 121 III (JASM, JBSM)

OE

0018882
 1004565
 1004566
 1011330
 1011331
 1018882

Clamp: Pin "50" M6
 Flange [mm]: 76
 Number of mounting bores: 3
 Number of Teeth: 10
 Number of Thread Bores: 3
 Rated Power [kW]: 1,1
 Rotation Direction: Clockwise rotation
 Voltage [V]: 12

MT-115JM
Starter


CITROEN AX (ZA-)
 CITROEN BERLINGO (B9)
 CITROEN BERLINGO (MF)
 CITROEN C-ELYSEE
 CITROEN C2 (JM-)
 CITROEN C3 I (FC-)

OE

5802000000000
 5802CR
 5802E9
 5802ER
 5802F3
 5802Q3

Clamp: M8, Pin "50" M5
 Number of mounting bores: 3
 Number of Teeth: 9
 Number of Thread Bores: 1
 Rated Power [kW]: 0,9
 Rotation Direction: Clockwise rotation
 Voltage [V]: 12

Electrics

MT-116JM

Starter



ALFA ROMEO 159 (939)
ALFA ROMEO 159 Sportwagon (939)
ALFA ROMEO BRERA
ALFA ROMEO SPIDER (939)
CHRYSLER DELTA
FIAT BRAVO II (198)

OE

0001Y03631
00K68080459AA
3110055L00
3110055L00000
3110055L01
31100T55L00

Clamp: M8 B+, Pin "50" M6
Flange [mm]: 76
Number of mounting bores: 3
Number of Teeth: 10
Number of Teeth: 11
Number of Thread Bores: 0
Rated Power [kW]: 1,4
Rotation Direction: Clockwise rotation
Voltage [V]: 12

MT-117JM

Starter



FIAT PALIO (178BX)
FIAT PALIO Weekend (178DX)
FIAT PANDA (141A_)
FIAT PUNTO (188)
FIAT SEICENTO (187)
FIAT SIENA (178_)

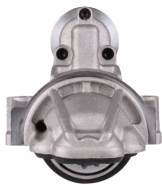
OE

46432262
46465475
46758241
46763530
46765839
46796553

Clamp: M8, Pin "50" M6
Flange [mm]: 64
Number of mounting bores: 3
Number of Teeth: 9
Number of Thread Bores: 2
Rated Power [kW]: 0,8
Rotation Direction: Clockwise rotation
Voltage [V]: 12

MT-118JM

Starter



LAND ROVER DEFENDER Cabrio (LD)
LAND ROVER DEFENDER Pick-up (LD_)
LAND ROVER DEFENDER Station Wagon (LD)

OE

1372739
1375378
1385378
1574338
1606413580
1669558

Clamp: Pin "30" M8 B+
Clamp: Pin "50" M6
Flange [mm]: 89
Number of mounting bores: 2
Number of Teeth: 12
Number of Thread Bores: 0
Rated Power [kW]: 2
Rotation Direction: Clockwise rotation
Voltage [V]: 12

MT-119JM

Starter



FORD C-MAX (DM2)
FORD C-MAX II
FORD FOCUS C-MAX
FORD FOCUS II (DA_)
FORD FOCUS II Station wagon (DA_)
FORD FOCUS II Tre volumi (DA_)

OE

1229427
1233234
1254222
1368970
1469712
1707507

Clamp: Pin "30" M8 B+
Clamp: Pin "50" M6
Number of mounting bores: 3
Number of Teeth: 11
Number of Thread Bores: 2
Rated Power [kW]: 1,2
Rotation Direction: Clockwise rotation
Voltage [V]: 12

MT-120JM

Starter



AUDI A1 (8X1, 8XF)
AUDI A1 Sportback (8XA, 8XK)
AUDI A3 (8P1)
AUDI A3 Cabriolet (8P7)
AUDI A3 Sportback (8PA)
AUDI Q3 (8U)

OE

02M911023N
02M911023NX
02M911023P
02M911023PX
02M911024
02M911024A

Clamp: Pin "50" Plug
Flange [mm]: 76
Number of mounting bores: 2
Number of Teeth: 11
Number of Teeth: 12
Number of Thread Bores: 0
Rated Power [kW]: 2
Rotation Direction: Anti-clockwise rotation
Voltage [V]: 12

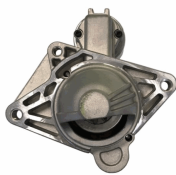
Electrics
MT-121JM
Starter


FORD ESCORT CLASSIC (AAL, ABL)
 FORD ESCORT V (GAL)
 FORD ESCORT V Station wagon (GAL, AVL)
 FORD ESCORT VI (GAL)
 FORD ESCORT VI Station wagon (GAL)
 FORD ESCORT VI Tre volumi (GAL)

OE

1008813
 1008835
 1027300
 1058429
 1061267
 1061627

Clamp: M8, Pin "50" M6
 Flange [mm]: 76
 Number of mounting bores: 3
 Number of Teeth: 10
 Number of Thread Bores: 3
 Rated Power [kW]: 2,2
 Rotation Direction: Clockwise rotation
 Voltage [V]: 12

MT-122JM
Starter


MERCEDES-BENZ CLASSE X (470)
 NISSAN NAVARA Pick-up (D23)
 NISSAN QASHQAI / QASHQAI +2 (J10, JJ10)
 NISSAN X-TRAIL (T31)
 RENAULT ALASKAN
 RENAULT ESPACE IV (JK0/1_)

OE

1202193
 1202204
 1202395
 2330000Q0A
 2330000Q0D
 2330000Q1E

Clamp: Pin "30" M8 B+
 Clamp: Pin "50" M5
 Flange [mm]: 76
 Number of mounting bores: 3
 Number of Teeth: 10
 Number of Teeth: 11
 Number of Thread Bores: 0
 Rated Power [kW]: 2,2
 Rotation Direction: Clockwise rotation
 Voltage [V]: 12

MT-123JM
Starter


HYUNDAI GALLOPER II (JK-01)
 HYUNDAI TERRACAN (HP)
 MITSUBISHI GALANT VI (EA_)
 MITSUBISHI GALANT VI Station wagon (EA_)
 MITSUBISHI L 200 (K7_T, K6_T)
 MITSUBISHI LANCER V (CB/D_A)

OE

23300FY500
 3610042250
 3610042350
 3610042450
 M002T84170
 M002T84171

Clamp: M10
 Flange [mm]: 77
 Number of mounting bores: 2
 Number of Teeth: 12
 Number of Thread Bores: 2
 Rated Power [kW]: 2,2
 Rotation Direction: Clockwise rotation
 Voltage [V]: 12

MT-124JM
Starter


CITROEN C1 (PM_, PN_)
 CITROEN C1 II
 PEUGEOT 107
 PEUGEOT 108
 TOYOTA AYGO (PAB4_, KGB4_)
 TOYOTA AYGO (WNB1_, KGB1_)

OE

1612092980
 1612350580
 281000Q012
 281000Q012D
 281000Q021
 281000Q030

Clamp: Pin "30" M8 B+
 Clamp: Pin "50" M5
 Flange [mm]: 74
 Number of mounting bores: 2
 Number of Teeth: 8
 Number of Thread Bores: 1
 Rated Power [kW]: 1,1
 Rotation Direction: Clockwise rotation
 Voltage [V]: 12

MT-125JM
Starter


FIAT CINQUECENTO (170)
 FIAT PANDA (141A_)
 FIAT SEICENTO (187)
 FIAT UNO (146A/E)
 LANCIA A 112
 SEAT FURA (025A)

OE

0003914191
 0003974104
 3914191
 3915113
 4229113
 4229114

Clamp: M8
 Flange [mm]: 62
 Number of mounting bores: 3
 Number of Teeth: 9
 Number of Thread Bores: 3
 Rated Power [kW]: 1,2
 Rotation Direction: Clockwise rotation
 Voltage [V]: 12

Electrics
MT-126JM
Starter


CITROEN BERLINGO (B9)
 CITROEN C1 (PM_, PN_)
 CITROEN C2 (JM_)
 CITROEN C3 I (FC_)
 CITROEN C3 II
 CITROEN C3 III (SX)

OE

28100YV020
 3647959
 5645100680
 5802AA
 5802EG
 5802Z8

Clamp: M8
 Number of mounting bores: 3
 Number of Teeth: 12
 Number of Thread Bores: 2
 Rated Power [kW]: 1,5
 Rotation Direction: Clockwise rotation
 Voltage [V]: 12

MT-127JM
Starter


AUDI A3 (8P1)
 AUDI A3 Cabriolet (8P7)
 AUDI A3 Sportback (8PA)
 SEAT ALTEA (5P1)
 SEAT ALTEA XL (5P5, 5P8)
 SEAT CORDOBA (6L2)

OE

02Z911023F
 02Z911023FX
 02Z911023H
 02Z911023HX
 02Z911024J
 2Z911023F

Clamp: Pin "30" M8 B+
 Clamp: Pin "50" Plug
 Flange [mm]: 76
 Number of mounting bores: 3
 Number of Teeth: 10
 Number of Thread Bores: 0
 Rated Power [kW]: 2
 Rotation Direction: Anti-clockwise rotation
 Voltage [V]: 12

MT-128JM
Starter


CHEVROLET CORSA Pick-up
 CHEVROLET CORSA Station wagon
 CHEVROLET CORSA Tre volumi
 CHEVROLET TRAX
 HONDA CIVIC VII Hatchback (EU, EP, EV)
 OPEL ASTRA CLASSIC (L48)

OE

1202591
 136934
 2506934
 31200PLZD00
 6202000
 6202043

Clamp: Pin "30" M8 B+
 Clamp: Pin "50" M4
 Flange [mm]: 78
 Number of mounting bores: 2
 Number of Teeth: 13
 Number of Thread Bores: 1
 Rated Power [kW]: 1,4
 Rotation Direction: Clockwise rotation
 Voltage [V]: 12

MT-129JM
Starter


FORD C-MAX (DM2)
 FORD FOCUS C-MAX
 FORD FOCUS II (DA_)
 FORD FOCUS II Cabriolet
 FORD FOCUS II Station wagon (DA_)
 FORD FOCUS II Tre volumi (DA_)

OE

1427763
 1476606
 1529431
 1904993
 4M5T11000FA
 6G9N11000GA

Clamp: M8 B+
 Flange [mm]: 63
 Number of mounting bores: 3
 Number of Teeth: 11
 Number of Thread Bores: 3
 Rated Power [kW]: 2,2
 Rotation Direction: Clockwise rotation
 Voltage [V]: 12

MT-130JM
Starter


BMW 02 (E10)
 BMW 02 Cabriolet (E10)
 BMW 02 Touring (E6)
 BMW 1500-2000 (115, 116, 118, 121)
 BMW 1600 GT Coupe
 BMW 2000-3.2 Coupe (E9)

OE

1005821194
 12411308543
 12411312104
 12411312130
 1312104
 1312130

Clamp: M8, Pin "50" M6
 Flange [mm]: 76
 Number of mounting bores: 2
 Number of Teeth: 9
 Number of Thread Bores: 0
 Rated Power [kW]: 1,7
 Rotation Direction: Clockwise rotation
 Voltage [V]: 12

Electrics
MT-131JM
Starter


DAEWOO LACETTI 2 volumi /Coda spiovente (KLAN)
 FIAT STILO (192)
 FIAT STILO Multi Wagon (192)
 OPEL AGILA (A) (H00)
 OPEL COMBO Tour

OE
 55351508
 55351608

Clamp: M8, Pin "50" M6
 Flange [mm]: 68
 Number of mounting bores: 2
 Number of Teeth: 9
 Number of Thread Bores: 0
 Rated Power [kW]: 1,1
 Rotation Direction: Clockwise rotation
 Voltage [V]: 12

MT-132JM
Starter


HYUNDAI GALLOPER I
 HYUNDAI GALLOPER II (JK-01)
 HYUNDAI TERRACAN (HP)
 MITSUBISHI GALANT II Station Wagon (A16_V)
 MITSUBISHI GALANT IV (A16_)
 MITSUBISHI GALANT V (E5_A, E7_A, E8_A)

OE
 1516954R
 3610042050
 3610047600
 3610047650
 HK988300
 HQ808670

Clamp: M8 B+
 Flange [mm]: 77
 Number of mounting bores: 2
 Number of Teeth: 13
 Number of Thread Bores: 2
 Rated Power [kW]: 2,2
 Rotation Direction: Clockwise rotation
 Voltage [V]: 12

MT-133JM
Starter


CARBODIES TX1
 FORD MAVERICK (UDS, UNS)
 NISSAN NAVARA (D21)
 NISSAN NAVARA (D22)
 NISSAN PATHFINDER (R50)
 NISSAN PICK UP (D21)

OE
 1516934R
 2330002N00
 2330010T01
 2330010T02
 233001W400
 233001W40A

Clamp: M8
 Flange [mm]: 95
 Number of mounting bores: 2
 Number of Teeth: 9
 Number of Thread Bores: 0
 Rated Power [kW]: 2,5
 Rotation Direction: Clockwise rotation
 Voltage [V]: 12

MT-134JM
Starter


FIAT DOBLO (119)
 LANCIA YPSILON (843)
 OPEL AGILA (A) (H00)
 OPEL AGILA (B) (H08)
 OPEL ASTRA CLASSIC (L48)
 OPEL ASTRA H (L48)

OE
 3110084EC0
 3110085E00
 31100M86J01
 33353237
 55217673
 55353237

Clamp: Pin "30" M8 B+
 Clamp: Pin "50" M6
 Flange [mm]: 64
 Number of mounting bores: 2
 Number of Teeth: 8
 Number of Teeth: 9
 Number of Thread Bores: 1
 Rated Power [kW]: 1,1
 Rotation Direction: Clockwise rotation
 Voltage [V]: 12

MT-135JM
Starter


TOYOTA YARIS (SCP1_, NLP1_, NCP1_)

OE
 2280009540
 281000J010
 281000J020
 281000J030
 281000J031
 281000J050

Clamp: Pin "50" Plug
 Flange [mm]: 74
 Number of mounting bores: 2
 Number of Teeth: 8
 Number of Thread Bores: 1
 Rated Power [kW]: 1,2
 Rotation Direction: Clockwise rotation
 Voltage [V]: 12

Electrics
MT-136JM
Starter


IVECO DAILY I Autobus
 IVECO DAILY I Cassone / Furgonato / Promiscuo
 IVECO DAILY I Pianale piatto/Telaio
 IVECO DAILY I Ribaltabile
 IVECO DAILY II Cassone / Furgonato / Promiscuo

OE
 004719664
 106055
 1516663R
 1516714R
 1516792R
 2995140

Clamp: M8
 Flange [mm]: 110
 Number of mounting bores: 3
 Number of Teeth: 9
 Number of Thread Bores: 1
 Rated Power [kW]: 2,2
 Rotation Direction: Clockwise rotation
 Voltage [V]: 12

MT-137JM
Starter


AUTOBIANCHI Y10
 FIAT PANDA (141A_)
 FIAT TIPO (160)
 FIAT UNO (146A/E)
 LANCIA Y10 (156)

OE
 46231510
 46402984
 5999906
 7539303
 7612952
 7621040

Clamp: M8
 Flange [mm]: 64
 Number of mounting bores: 3
 Number of Teeth: 9
 Number of Thread Bores: 1
 Rated Power [kW]: 0,8
 Rotation Direction: Clockwise rotation
 Voltage [V]: 12

MT-138JM
Starter


CHEVROLET AVEO 2 volumi /Coda spiovente (T200)
 CHEVROLET AVEO 2 volumi /Coda spiovente (T250, T255)
 CHEVROLET AVEO Tre volumi (T200)
 CHEVROLET AVEO Tre volumi (T250, T255)

OE
 09000700
 09000756
 09117031
 09130838
 09133598
 09163856

Clamp: M8, Pin "50" M6
 Flange [mm]: 68
 Number of mounting bores: 2
 Number of Teeth: 10
 Number of Thread Bores: 0
 Rated Power [kW]: 1,3
 Rotation Direction: Clockwise rotation
 Voltage [V]: 12

MT-139JM
Starter


DACIA LOGAN (LS_)
 DACIA LOGAN II
 DACIA LOGAN MCV II
 DACIA SANDERO
 DACIA SANDERO II
 RENAULT CLIO Grandtour (KR0/1_)

OE
 2330000QAM
 2330000QAY
 5802X6
 7700864608
 7700865213
 7700867838

Clamp: M8
 Flange [mm]: 63,5
 Number of mounting bores: 3
 Number of Teeth: 9
 Number of Thread Bores: 1
 Rated Power [kW]: 0,9
 Rotation Direction: Clockwise rotation
 Voltage [V]: 12

MT-140JM
Starter


TOYOTA AURIS (NRE15_, ZZE15_, ADE15_, ZRE15_, NDE15_)
 TOYOTA YARIS (SCP9_, NSP9_, KSP9_, NCP9_, ZSP9_)

OE
 281000N010

Clamp: Pin "50" Plug
 Flange [mm]: 74
 Number of mounting bores: 2
 Number of Teeth: 9
 Number of Thread Bores: 1
 Rated Power [kW]: 1,1
 Rotation Direction: Clockwise rotation
 Voltage [V]: 12

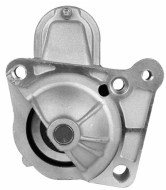
Electrics
MT-141JM
Starter


LEXUS IS II (GSE2_, ALE2_, USE2_)
 TOYOTA AURIS (NRE15_, ZZE15_, ADE15_,
 ZRE15_, NDE15_)
 TOYOTA AURIS (NZE18_, ZRE18_)
 TOYOTA AURIS TOURING SPORTS (ADE18_,
 ZWE18_, ZRE18_)

OE

281000G040
 281000R010
 281000R01084
 281000R030
 281000R03084
 281000R060

Clamp: Pin "30" M8 B+
 Clamp: Pin "50" Plug
 Flange [mm]: 74
 Number of mounting bores: 2
 Number of Teeth: 9
 Number of Thread Bores: 2
 Rated Power [kW]: 2
 Rotation Direction: Clockwise rotation
 Voltage [V]: 12

MT-142JM
Starter


MITSUBISHI CARISMA (DA_)
 MITSUBISHI CARISMA Tre volumi (DA_)
 MITSUBISHI SPACE STAR (DG_A)
 NISSAN PRIMERA (P12)
 NISSAN PRIMERA Hatchback (P12)
 NISSAN PRIMERA Station wagon (WP12)

OE

1810A048
 2330000Q0E
 2330000QAC
 2330000QAE
 23300AW300
 23300AW302

Clamp: Pin "30" M8 B+
 Clamp: Pin "50" M5
 Number of mounting bores: 4
 Number of Teeth: 11
 Number of Thread Bores: 3
 Rated Power [kW]: 2,1
 Rotation Direction: Clockwise rotation
 Voltage [V]: 12

MT-143JM
Starter


MERCEDES-BENZ CLASSE A (W168)
 MERCEDES-BENZ Vaneo (414)

OE

0051511601
 005151160180
 0051517401
 005151740180
 A0051511601
 A005151160180

Clamp: M8, Pin "50" M6
 Flange [mm]: 70
 Number of mounting bores: 2
 Number of Teeth: 10
 Number of Thread Bores: 0
 Rated Power [kW]: 1,7
 Rotation Direction: Clockwise rotation
 Voltage [V]: 12

MT-144JM
Starter


OPEL ASTRA GTC J
 OPEL ASTRA J
 OPEL ASTRA J Sports Tourer
 OPEL ASTRA J Tre volumi
 OPEL CORSA D
 OPEL MERIVA B

OE

1202110
 1202281
 1202421
 55566800
 55568572
 95520115

Clamp: Pin "50" M6
 Flange [mm]: 68
 Number of mounting bores: 2
 Number of Teeth: 9
 Number of Thread Bores: 0
 Rated Power [kW]: 1,1
 Rotation Direction: Clockwise rotation
 Voltage [V]: 12

MT-145JM
Starter


CITROEN BERLINGO (B9)
 CITROEN BERLINGO (K9)
 CITROEN BERLINGO (MF)
 CITROEN C-ELYSEE
 CITROEN C2 (JM_)
 CITROEN C3 AIRCROSS II

OE

12417794971
 12417805098
 1638116880
 3110069K00
 3640318
 5802AE

Clamp: Pin "50" M5
 Number of mounting bores: 4
 Number of Teeth: 11
 Number of Thread Bores: 2
 Rated Power [kW]: 2,2
 Rotation Direction: Clockwise rotation
 Voltage [V]: 12

Electrics
MT-146JM
Starter


AUDI A2 (8Z0)
 AUDI A3 (8L1)
 FORD GALAXY (WGR)
 SEAT ALHAMBRA (7V8, 7V9)
 SEAT AROSA (6H)
 SEAT CORDOBA (6K1, 6K2)

OE

02A911023G
 02A911023GX
 02A911023J
 02A911023JX
 02A911023R
 02A911023RX

Clamp: M8
 Flange [mm]: 76
 Number of mounting bores: 2
 Number of Teeth: 10
 Number of Thread Bores: 0
 Rated Power [kW]: 1,8
 Rotation Direction: Anti-clockwise rotation
 Voltage [V]: 12

MT-147JM
Starter


SUZUKI JIMNY (FJ)
 SUZUKI JIMNY Fuoristrada aperto (SN)
 SUZUKI SAMURAI (SJ)
 SUZUKI SAMURAI Fuoristrada aperto (SJ)
 SUZUKI SJ 413
 SUZUKI VITARA (ET, TA)

OE

1A5118400
 3100083021
 3110060A10
 3110060A10000
 3110060A11
 3110060A12

Clamp: M8
 Flange [mm]: 66
 Number of mounting bores: 2
 Number of Teeth: 8
 Number of Teeth: 9
 Number of Thread Bores: 0
 Rated Power [kW]: 0,9
 Rotation Direction: Clockwise rotation
 Voltage [V]: 12

MT-148JM
Starter


AUDI 80 (89, 89Q, 8A, B3)
 AUDI 80 (8C, B4)
 AUDI 80 Avant (8C, B4)
 AUDI 90 (89, 89Q, 8A, B3)
 AUDI A4 (8D2, B5)
 AUDI A4 (8E2, B6)

OE

068911023P
 068911023R
 068911023RX
 068911023S
 068911023SX
 068911024B

Clamp: M8
 Clamp: Pin "50" 6.3mm Spade
 Flange [mm]: 82,5
 Number of mounting bores: 2
 Number of Teeth: 10
 Number of Teeth: 9
 Number of Thread Bores: 2
 Rated Power [kW]: 1,7
 Rotation Direction: Clockwise rotation
 Voltage [V]: 12

MT-149JM
Starter


MERCEDES-BENZ CLASSE A (W168)
 MERCEDES-BENZ CLASSE A (W169)
 MERCEDES-BENZ CLASSE B (W245)
 MERCEDES-BENZ Vaneo (414)

OE

0041518501
 004151850180
 0051212101
 0051511101
 005151110180
 0051512101

Clamp: Pin "50" M6
 Flange [mm]: 70
 Number of mounting bores: 2
 Number of Teeth: 10
 Number of Teeth: 9
 Number of Thread Bores: 0
 Rated Power [kW]: 1,3
 Rotation Direction: Clockwise rotation
 Voltage [V]: 12

MT-150JM
Starter


FORD MONDEO III (B5Y)
 FORD MONDEO III Station wagon (BWY)
 FORD MONDEO III Tre volumi (B4Y)
 JAGUAR X-TYPE (CF1)
 JAGUAR X-TYPE Estate
 LTI TX

OE

1096338
 1120215
 1140110
 1151641
 1202166
 1214371

Clamp: M8, Pin "50" M6
 Number of mounting bores: 4
 Number of Teeth: 19
 Number of Thread Bores: 0
 Rated Power [kW]: 2,1
 Rotation Direction: Clockwise rotation
 Voltage [V]: 12

Electrics
MT-151JM
Starter


ALFA ROMEO MITO (955)
 CHRYSLER YPSILON
 CITROEN NEMO Station wagon
 FIAT 500 (312)
 FIAT 500 C (312)
 FIAT 500L

OE

1202203
 1202266
 1202508
 1612794380
 1616323380
 1723350

Clamp: M8 B+
 Flange [mm]: 64
 Number of mounting bores: 2
 Number of Teeth: 10
 Number of Thread Bores: 1
 Rated Power [kW]: 1,4
 Rotation Direction: Clockwise rotation
 Voltage [V]: 12

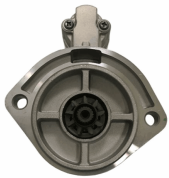
MT-152JM
Starter


DACIA SOLENZA
 DACIA SUPERNOVA
 MAZDA 2 (DE)
 RENAULT 11 (B/C37_)
 RENAULT 19 I (B/C53_)
 RENAULT 19 I Cabriolet (D53_)

OE

0000431120
 0000434120
 1059564
 1516729R
 1516807R
 18213M68KA000

Clamp: M8
 Flange [mm]: 66
 Number of mounting bores: 4
 Number of Teeth: 11
 Number of Teeth: 9
 Number of Thread Bores: 4
 Rated Power [kW]: 1,4
 Rotation Direction: Clockwise rotation
 Voltage [V]: 12

MT-153JM
Starter


NISSAN CABSTAR Pick-up
 NISSAN TRADE Autobus
 NISSAN TRADE Furgonato
 NISSAN TRADE Pianale piatto/Telaio

OE

136914
 233000T600
 233001S900
 2330054T00
 2330090067
 2330090069

Clamp: M8
 Flange [mm]: 95
 Number of mounting bores: 2
 Number of Teeth: 9
 Number of Thread Bores: 0
 Rated Power [kW]: 2,2
 Rotation Direction: Clockwise rotation
 Voltage [V]: 12

MT-154JM
Starter


NISSAN MICRA C+C (K12)
 NISSAN MICRA II (K11)
 NISSAN MICRA III (K12)
 NISSAN NOTE (E11)

OE

233001F710
 233001F715
 233001F770
 233001F771
 233001F772
 233001F772B

Clamp: M8, Pin "50" M6
 Flange [mm]: 70
 Number of mounting bores: 2
 Number of Teeth: 8
 Number of Thread Bores: 1
 Rated Power [kW]: 1,1
 Rotation Direction: Clockwise rotation
 Voltage [V]: 12

MT-155JM
Starter


DACIA DOKKER
 DACIA DUSTER
 DACIA LODGY
 RENAULT CAPTUR
 RENAULT CLIO Grandtour IV
 RENAULT CLIO IV

OE

2330000Q3D
 233000557R
 233000779R
 233001071
 233001071R
 233003307R

Clamp: Pin "30" M8 B+
 Clamp: Pin "50" M5
 Number of mounting bores: 4
 Number of Teeth: 11
 Number of Thread Bores: 3
 Rated Power [kW]: 1
 Rotation Direction: Clockwise rotation
 Voltage [V]: 12

Electrics
MT-156JM
Starter


SMART CABRIO (450)
 SMART CITY-COUPE (450)
 SMART CROSSBLADE (450)
 SMART FORTWO Cabrio (450)
 SMART FORTWO Coupé (450)
 SMART ROADSTER (452)

OE
 0003188V004
 0003188V005
 0003188V006
 0003188V007
 0003188V008
 0003188V008000000

Clamp: M8
 Flange [mm]: 70
 Number of mounting bores: 3
 Number of Teeth: 9
 Number of Thread Bores: 2
 Rated Power [kW]: 0,8
 Rotation Direction: Clockwise rotation
 Voltage [V]: 12

MT-157JM
Starter


MERCEDES-BENZ CLASSE C (W204)
 MERCEDES-BENZ CLASSE C Coupé (C204)
 MERCEDES-BENZ CLASSE C T-Model (S204)
 MERCEDES-BENZ CLASSE E (W212)
 MERCEDES-BENZ CLASSE E Cabriolet (A207)
 MERCEDES-BENZ CLASSE E Coupé (C207)

OE
 0009060126
 000906012680
 0061514501
 006151450180
 6519060026
 651906002680

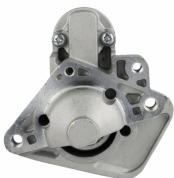
Clamp: M8 B+
 Clamp: Pin "50" M6
 Flange [mm]: 70
 Number of mounting bores: 2
 Number of Teeth: 12
 Number of Thread Bores: 2
 Rated Power [kW]: 1,7
 Rotation Direction: Clockwise rotation
 Voltage [V]: 12

MT-158JM
Starter


FIAT FIORINO Pick up (146)
 FIAT PALIO (178BX)
 FIAT PALIO Weekend (178DX)
 FIAT PUNTO (176)
 FIAT SIENA (178_)
 FIAT STRADA Pick-up (178E)

OE
 46430721
 46439669
 4643970
 46439700
 46440079
 46446291

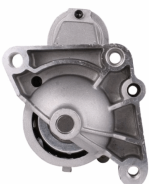
Clamp: Pin "50" M6
 Flange [mm]: 82
 Number of mounting bores: 3
 Number of Teeth: 9
 Number of Thread Bores: 3
 Rated Power [kW]: 1,7
 Rotation Direction: Clockwise rotation
 Voltage [V]: 12

MT-159JM
Starter


DACIA DOKKER
 DACIA DUSTER
 DACIA LODGY
 DACIA LOGAN II
 DACIA LOGAN MCV II
 DACIA SANDERO II

OE
 2330000Q2H
 233000379R
 233004868C
 233004868R
 233007689R
 233009323R

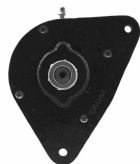
Clamp: M8 B+
 Clamp: Pin "50" Plug
 Flange [mm]: 64
 Number of mounting bores: 2
 Number of Teeth: 12
 Number of Teeth: 13
 Number of Thread Bores: 2
 Rated Power [kW]: 1,7
 Rotation Direction: Clockwise rotation
 Voltage [V]: 12

MT-160JM
Starter


RENAULT AVANTIME (DE0_)
 RENAULT ESPACE III (JE0_)
 RENAULT ESPACE IV (JK0/1_)
 RENAULT LAGUNA II (BG0/1_)
 RENAULT LAGUNA II Grandtour (KG0/1_)
 RENAULT VEL SATIS (BJ0_)

OE
 1202206
 1202208
 2330000Q0B
 2330000Q0C
 2330000QAF
 2330000QAG

Clamp: M8
 Number of mounting bores: 4
 Number of Teeth: 10
 Number of Thread Bores: 3
 Rated Power [kW]: 2
 Rotation Direction: Clockwise rotation
 Voltage [V]: 12

Electrics
MT-161JM
Starter


PIAGGIO APE (MP) VESPACAR
 PIAGGIO APE TM Furgonato
 PIAGGIO APE TM Pianale piatto/Telaio

OE

157715
 803499
 8034993
 834692

Number of mounting bores: 2
 Number of Thread Bores: 0
 Rated Power [kW]: 0,8
 Voltage [V]: 12

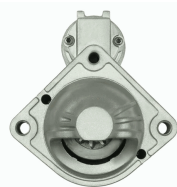
MT-162JM
Starter


FORD C-MAX II
 FORD FOCUS II (DA_)
 FORD FOCUS II Station wagon (DA_)
 FORD FOCUS II Tre volumi (DA_)
 FORD FOCUS III
 FORD FOCUS III Tre volumi

OE

1687623
 1715211
 1778016
 1893556
 1898356
 2033247

Clamp: Pin "30" M8 B+
 Clamp: Pin "50" M6
 Number of mounting bores: 3
 Number of Teeth: 11
 Number of Thread Bores: 0
 Rated Power [kW]: 2,3
 Rotation Direction: Clockwise rotation
 Voltage [V]: 12

MT-163JM
Starter


BMW 1 (E87)
 BMW 3 (E46)
 BMW 3 Cabriolet (E46)
 BMW 3 Compact (E46)
 BMW 3 Coupe (E46)
 BMW 3 Touring (E46)

OE

12417787354
 12417787356
 7787354
 7787356

Clamp: 30H M5
 Clamp: Pin 50 M6
 Flange [mm]: 74
 Number of mounting bores: 2
 Number of Teeth: 10
 Number of Thread Bores: 2
 Rated Power [kW]: 1,6
 Rotation Direction: Clockwise rotation
 Voltage [V]: 12

MT-164JM
Starter


CHEVROLET MATIZ (M200, M250)
 CHEVROLET SPARK
 DAEWOO MATIZ
 DAEWOO MATIZ (KLYA)
 DAEWOO TICO (KLY3)
 SUZUKI WAGON R+ (EM)

OE

3110070B20
 3110075F0
 3110075F00
 3110075F01
 3110075F01000
 3110075F02

Clamp: M8
 Flange [mm]: 75
 Number of mounting bores: 2
 Number of Teeth: 8
 Number of Thread Bores: 2
 Rated Power [kW]: 1
 Rotation Direction: Clockwise rotation
 Voltage [V]: 12

MT-165JM
Starter


SUBARU TREZIA
 TOYOTA AURIS (NRE15_, ZZE15_, ADE15_,
 ZRE15_, NDE15_)
 TOYOTA AURIS (NZE18_, ZRE18_)
 TOYOTA AURIS TOURING SPORTS (ADE18_,
 ZWE18_, ZRE18_)

OE

281000N040
 281000N04084
 281000N060
 2810033090
 2810033110

Clamp: Pin "50" Plug
 Flange [mm]: 74
 Number of mounting bores: 2
 Number of Teeth: 9
 Number of Thread Bores: 1
 Rated Power [kW]: 1,6
 Rotation Direction: Clockwise rotation
 Voltage [V]: 12

Electrics

MT-166JM

Starter



AUDI A6 (4B2, C5)
DAEWOO MATIZ (KLYA)
JAGUAR XJ (X350, X358)
NEW HOLLAND TN-A
TOYOTA LAND CRUISER (KDJ12_, GRJ12_)

OE
580 144 18 16
5801441816

Clamp: M8 B+
Flange [mm]: 110
Number of mounting bores: 3
Number of Teeth: 9
Number of Thread Bores: 0
Rated Power [kW]: 2,6
Rotation Direction: Clockwise rotation
Voltage [V]: 12

MT-167JM

Starter



TOYOTA AVENSIS VERSO (_CLM2_, _ACM2_)
TOYOTA CARINA E (_T19_)
TOYOTA CARINA E Sportswagon (_T19_)
TOYOTA CARINA E Tre volumi (_T19_)
TOYOTA COROLLA (_E11_)
TOYOTA COROLLA Compact (_E11_)

OE
2810064140
2810064310
2810064430
TT15639

Clamp: M8
Flange [mm]: 74
Number of mounting bores: 2
Number of Teeth: 10
Number of Thread Bores: 2
Rated Power [kW]: 2,2
Rotation Direction: Clockwise rotation
Voltage [V]: 12

MT-168JM

Starter



FIAT BRAVA (182)
FIAT BRAVO I (182)
FIAT DOBLO (119)
FIAT MAREA (185)
FIAT MAREA Weekend (185)
FIAT MULTIPLA (186)

OE
361002B402
46231536
46451529
46524472
46531437
46748349

Clamp: M8, Pin "50" M6
Flange [mm]: 63,5
Number of mounting bores: 3
Number of Teeth: 9
Number of Thread Bores: 3
Rated Power [kW]: 1,3
Rotation Direction: Clockwise rotation
Voltage [V]: 12

MT-169JM

Starter



BMW 1 (E81)
BMW 1 (E87)
BMW 1 (F20)
BMW 1 (F21)
BMW 1 Cabriolet (E88)
BMW 1 Coupé (E82)

OE
12417798006
12417801203
12417802508
12417804138
12417804140
12417811601

Clamp: Pin "30" M8 B+
Clamp: Pin "50" M6
Flange [mm]: 69
Number of mounting bores: 3
Number of Teeth: 11
Number of Thread Bores: 0
Rated Power [kW]: 2,2
Rotation Direction: Clockwise rotation
Voltage [V]: 12

MT-170JM

Starter



AUDI A3 (8P1)
AUDI A3 Cabriolet (8P7)
AUDI A3 Sportback (8PA)
AUDI TT (8J3)
AUDI TT (8N3)
AUDI TT Roadster (8J9)

OE
02E911023H
02E911023HX
02E911023L
02E911023LX
2E911023H
2E911023HX

Clamp: Pin "50" Plug
Flange [mm]: 76
Number of mounting bores: 2
Number of Teeth: 11
Number of Thread Bores: 0
Rated Power [kW]: 2
Rotation Direction: Anti-clockwise rotation
Voltage [V]: 12

Electrics
MT-171JM
Starter


DACIA LOGAN (LS_)
 DACIA LOGAN Pick-up (US_)
 DACIA SANDERO
 NISSAN ALMERA II (N16)
 NISSAN ALMERA II Hatchback (N16)
 NISSAN MICRA III (K12)

OE

2330000Q0G
 2330000Q0H
 2330000QAB
 2330000QAW
 2330000QAZ
 2330000QUA

Clamp: M8
 Flange [mm]: 65
 Number of mounting bores: 3
 Number of Teeth: 12
 Number of Thread Bores: 2
 Rated Power [kW]: 1,4
 Rotation Direction: Clockwise rotation
 Voltage [V]: 12

MT-172JM
Starter


BMW 1 Cabriolet (E88)
 HYUNDAI ACCENT III (MC)
 HYUNDAI ACCENT III Tre volumi (MC)
 HYUNDAI ACCENT IV Tre volumi (RB)
 HYUNDAI ELANTRA Tre volumi (MD, UD)
 HYUNDAI GETZ (TB)

OE

361002A000
 361002A100
 361002A300
 TT16345
 TT16345PRO

Clamp: M8 B+
 Clamp: Pin "50" Plug
 Flange [mm]: 77
 Number of mounting bores: 2
 Number of Teeth: 8
 Number of Thread Bores: 2
 Rated Power [kW]: 1,7
 Rotation Direction: Clockwise rotation
 Voltage [V]: 12

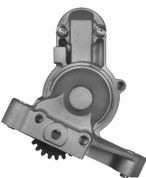
MT-173JM
Starter


BMW 1 (E81)
 BMW 1 (E87)
 BMW 3 (E46)
 BMW 3 (E90)
 BMW 3 Cabriolet (E46)
 BMW 3 Cabriolet (E93)

OE

12417794952
 12417796892
 12417798035
 12417798036
 7794952
 7796892

Clamp: Pin "30" M8 B+
 Clamp: Pin "50" M6
 Flange [mm]: 74
 Number of mounting bores: 2
 Number of Teeth: 9
 Number of Thread Bores: 2
 Rated Power [kW]: 1,8
 Rotation Direction: Clockwise rotation
 Voltage [V]: 12

MT-174JM
Starter


CHRYSLER SEBRING (JS)
 CHRYSLER SEBRING Cabriolet (JS)
 DODGE AVENGER
 DODGE CALIBER
 DODGE JOURNEY
 JEEP COMPASS (MK49)

OE

050033440AC
 05033440AA
 05033440AC
 1810A062
 1810A143
 5033440AA

Clamp: M8 B+
 Number of mounting bores: 3
 Number of Teeth: 22
 Number of Thread Bores: 0
 Rated Power [kW]: 2
 Rotation Direction: Anti-clockwise rotation
 Voltage [V]: 12

MT-175JM
Starter


METROCAB Taxi
 TOYOTA CROWN Tre volumi (_S1_)
 TOYOTA HILUX Fuoristrada chiuso (ZN13_, LN9_,
 RN1_, YN8_,
 TOYOTA HILUX II Pick-up (RN6_, RN5_, LN6_,
 YN6_, YN5_, LN

OE

1516979R
 2810005030
 2810054070
 2810054080
 2810054100
 2810054110

Clamp: M8
 Flange [mm]: 82,5
 Number of mounting bores: 2
 Number of Teeth: 10
 Number of Teeth: 11
 Number of Thread Bores: 1
 Rated Power [kW]: 2
 Rotation Direction: Clockwise rotation
 Voltage [V]: 12

Electrics
MT-176JM
Starter


CHEVROLET AVEO 2 volumi /Coda spiovente (T200)
 CHEVROLET AVEO 2 volumi /Coda spiovente (T250, T255)
 CHEVROLET AVEO 2 volumi /Coda spiovente (T300)

OE

25187951
 63522629
 96289430
 96469962
 96497702
 96943429

Clamp: M8
 Flange [mm]: 75
 Number of Holes: 2
 Number of mounting bores: 2
 Number of Teeth: 8
 Number of Thread Bores: 1
 Position / Degree: 30
 Rated Power [kW]: 0,8
 Remanufactured Part:
 Rotation Direction: Clockwise rotation
 Voltage [V]: 12
 Weight [kg]: 3,415

MT-177JM
Starter


DACIA DOKKER
 DACIA DUSTER
 DACIA LODGY
 DACIA LOGAN (LS_)
 DACIA LOGAN II
 DACIA LOGAN MCV (KS_)

OE

2330000Q1A
 2330000Q1L
 2330000QAA
 2330000QAX
 233001105R
 233004003

Clamp: M8
 Flange [mm]: 65
 Number of mounting bores: 3
 Number of Teeth: 8
 Number of Teeth: 9
 Number of Thread Bores: 3
 Rated Power [kW]: 1
 Rotation Direction: Clockwise rotation
 Voltage [V]: 12

MT-178JM
Starter


AUDI A1 (8X1, 8XF)
 AUDI A1 Sportback (8XA, 8XK)
 AUDI A3 (8P1)
 AUDI A3 Sportback (8PA)
 SEAT ALTEA (5P1)
 SEAT ALTEA XL (5P5, 5P8)

OE

02T911023R
 02T911023RX
 02T911023S
 02T911023SX
 02T911024A
 02T911024AX

Clamp: M8 B+
 Clamp: Pin "50" Plug
 Flange [mm]: 76
 Number of mounting bores: 2
 Number of Teeth: 10
 Number of Teeth: 9
 Number of Thread Bores: 0
 Rated Power [kW]: 1
 Rotation Direction: Anti-clockwise rotation
 Voltage [V]: 12

MT-179JM
Starter


FIAT SEDICI
 SUBARU JUSTY III (G3X)
 SUZUKI GRAND VITARA II (JT)
 SUZUKI IGNIS (FH)
 SUZUKI IGNIS II
 SUZUKI JIMNY (FJ)

OE

3110063J00
 3110063J10
 3110075F60
 3110080G0
 3110080G00
 3110080G1

Clamp: Pin "30" M8 B+
 Clamp: Pin "50" 6.4mm Plug
 Flange [mm]: 70
 Number of mounting bores: 2
 Number of Teeth: 8
 Number of Thread Bores: 2
 Rated Power [kW]: 1
 Rotation Direction: Clockwise rotation
 Voltage [V]: 12

MT-180JM
Starter


MITSUBISHI PAJERO II (V3_W)
 MITSUBISHI PAJERO II (V3_W, V2_W, V4_W)
 MITSUBISHI PAJERO III (V7_W, V6_W)
 MITSUBISHI PAJERO III Fuoristrada aperto (V6_W, V7_W)
 MITSUBISHI PAJERO IV (V8_W, V9_W)

OE

009154720280
 1516512R
 1810A050
 1810A050R
 A009154720280
 M002T63271

Clamp: M8
 Flange [mm]: 77
 Number of mounting bores: 2
 Number of Teeth: 10
 Number of Thread Bores: 2
 Rated Power [kW]: 2,2
 Rotation Direction: Clockwise rotation
 Voltage [V]: 12

Electrics
MT-181JM
Starter


DAIHATSU HIJET Furgonato (S85)
 DAIHATSU HIJET Pick-up
 PIAGGIO PORTER Autobus
 PIAGGIO PORTER Furgonato
 PIAGGIO PORTER Pianale piatto/Telaio

OE
 2280005711
 2810087548
 2810087551
 2810087551000

Clamp: M8
 Flange [mm]: 74
 Number of mounting bores: 2
 Number of Teeth: 8
 Number of Thread Bores: 0
 Rated Power [kW]: 0,8
 Rotation Direction: Clockwise rotation
 Voltage [V]: 12

MT-182JM
Starter


RENAULT KANGOO (KC0/1_)
 RENAULT MEGANE I (BA0/1_)
 RENAULT MEGANE I Classic (LA0/1_)
 RENAULT MEGANE I Coach (DA0/1_)
 RENAULT MEGANE I Grandtour (KA0/1_)
 RENAULT MEGANE Scenic (JA0/1_)

OE
 6001545511
 7700113267
 7700113627
 7700116282
 7711134297
 7711134790

Clamp: M8
 Flange [mm]: 65
 Number of mounting bores: 3
 Number of Teeth: 12
 Number of Thread Bores: 3
 Rated Power [kW]: 1,7
 Rotation Direction: Clockwise rotation
 Voltage [V]: 12

MT-183JM
Starter


FORD TRANSIT Autobus (E_)
 FORD TRANSIT Autobus (V_)
 FORD TRANSIT Furgonato (E_)
 FORD TRANSIT Furgonato (T_)
 FORD TRANSIT Furgonato (V_)
 FORD TRANSIT Pianale piatto/Telaio (E_)

OE
 1008823
 1024508
 1027928
 1059179
 1073108
 1093471

Clamp: M8, Pin "50" M6
 Flange [mm]: 92
 Number of mounting bores: 3
 Number of Teeth: 13
 Number of Thread Bores: 0
 Rated Power [kW]: 2,3
 Rotation Direction: Clockwise rotation
 Voltage [V]: 12

MT-184JM
Starter


AUDI A3 (8P1)
 AUDI A3 Cabriolet (8P7)
 AUDI A3 Sportback (8PA)
 SEAT ALTEA (5P1)
 SEAT ALTEA XL (5P5, 5P8)
 SEAT IBIZA V (6J5, 6P5)

OE
 0AH911023
 0AH911023A
 0AH911023AX
 0AH911023D
 0AH911023DX
 0AH911023K

Clamp: M8
 Flange [mm]: 76
 Number of mounting bores: 3
 Number of Teeth: 10
 Number of Thread Bores: 0
 Rated Power [kW]: 1,1
 Rotation Direction: Clockwise rotation
 Voltage [V]: 12

MT-185JM
Starter


AUDI A4 (8EC, B7)
 AUDI A4 Avant (8ED, B7)
 AUDI A4 Cabriolet (8H7, B6, 8HE, B7)
 AUDI A6 (4F2, C6)
 AUDI A6 Avant (4F5, C6)
 SEAT EXEO (3R2)

OE
 03G911023
 03G911023X
 TT15338PRO

Clamp: M8 B+
 Flange [mm]: 82
 Number of mounting bores: 2
 Number of Teeth: 9
 Number of Thread Bores: 0
 Rated Power [kW]: 2
 Rotation Direction: Clockwise rotation
 Voltage [V]: 12

Electrics

MT-186JM

Starter



AUDI A1 (8X1, 8XF)
 AUDI A1 Sportback (8XA, 8XK)
 AUDI A3 (8P1)
 AUDI A3 Cabriolet (8P7)
 AUDI A3 Sportback (8PA)
 SEAT ALTEA (5P1)

OE

02N911023N
 02Z911023M
 02Z911023MX
 02Z911023N
 02Z911023NX
 02Z911023P

Clamp: M8 B+
 Flange [mm]: 76
 Number of mounting bores: 3
 Number of Teeth: 11
 Number of Teeth: 12
 Number of Thread Bores: 0
 Rated Power [kW]: 1,7
 Rotation Direction: Clockwise rotation
 Voltage [V]: 12

MT-187JM

Starter



NISSAN NAVARA (D40)
 NISSAN PATHFINDER (R51)

OE

23300EB300
 23300EB30A
 23300EB30B
 23300EB30REX
 23300EB71B
 23300EB71E

Clamp: Pin "30" M8 B+
 Clamp: Pin "50" M5
 Flange [mm]: 70
 Number of mounting bores: 2
 Number of Teeth: 11
 Number of Teeth: 12
 Number of Thread Bores: 2
 Rated Power [kW]: 2
 Rotation Direction: Clockwise rotation
 Voltage [V]: 12

MT-188JM

Starter



CITROEN AX (ZA-)
 CITROEN BERLINGO (B9)
 CITROEN BERLINGO (MF)
 CITROEN BX (XB-)
 CITROEN BX Break (XB-)
 CITROEN C-ELYSEE

OE

1516758R
 3960404
 534054A
 534054B
 534054C
 534054D

Clamp: M8
 Clamp: Pin "50" 6.4mm Plug
 Number of mounting bores: 3
 Number of Teeth: 10
 Number of Teeth: 9
 Number of Thread Bores: 1
 Rated Power [kW]: 0,9
 Rotation Direction: Clockwise rotation
 Voltage [V]: 12

Engine

KAA-003JM

Camshaft Kit



FORD FOCUS IV
 FORD FOCUS IV Turnier (HP)
 FORD GALAXY
 FORD GALAXY MK III VAN (CK)
 FORD KUGA III (DFK)
 FORD MONDEO V 2 volumi /Coda spiovente

OE

2321504
 2325380
 2434799
 2435502
 2536951
 2626577

Fitting Position: Exhaust Side
 Fitting Position: Intake Side
 Supplementary Article/Supplementary Info 2:
 With cover

Filter

FA-0339JM

Air Filter



JAGUAR X-TYPE (CF1)
 JAGUAR X-TYPE Estate

OE

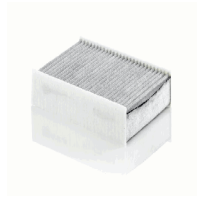
4X43-9601-BA
 C2S 26965
 C2S 36774
 C2S36774

Filter Type: Filter Insert
 For OE number: C2S36774
 Height [mm]: 56
 Length [mm]: 454
 Width [mm]: 89

Filter

FAA-054JM

Filter, interior air



SEAT Mii (KF1_)
SKODA CITIGO
SKODA E-CITIGO (NE1)
VW LOAD UP
VW UP

OE

1S0 819 669
1S0819669

Filter Type: Activated Carbon Filter
For OE number: 1S0 819 669
Height [mm]: 35
Length [mm]: 254
Width [mm]: 182

FC-0202JM

Fuel filter



ALFA ROMEO 147 (937)
ALFA ROMEO 156 (932)
ALFA ROMEO 156 Sportwagon (932)
ALFA ROMEO 166 (936)
CITROEN JUMPER Autobus (230P)
CITROEN JUMPER Autobus (244, Z_)

OE

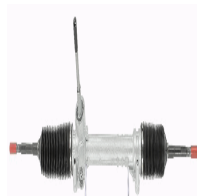
0 K2KB 13480
0 K2KK 13483
0K2KK13 483A
1906 66
1906 67
1906 C3

Filter Type: Screw-on Filter
For OE number: 46797378
Height [mm]: 158
Inner Diameter 2 [mm]: 60
Outer Diameter 2 [mm]: 68
Outer Diameter [mm]: 84
Thread Size Exit: M 16 X 1.5

Mounting

SG-0001JM

Steering Box



FIAT 500 (312)
FIAT 500 C (312)
FORD KA (RU8)

OE

10774862
10797155
1797155
51915239
51915326
51934264

Axle Joint Thread Size: M12x1,5
Axle Joint Thread Type: with external thread
Driver Position: For left-hand drive vehicles
Input shaft connecting type: Splined
Input Shaft Diameter [mm]: 14,1
Input shaft height [mm]: 128
Left-hand / Right-hand Traffic: For right-hand traffic
Length 1/ Length 2 [mm]: stroke= 150
Mounting Bores Distance [mm]: 339
Number of splines on input shaft: 26
Number of steering wheel turns: 3
Operating Mode: Electric
Operating Mode: Manual
Overall Length [mm]: 1045
Steering Gear Type: Rack-and-pinion steering gear

SG-0002JM

Steering Box



FIAT 500L

OE

51885439
51909794

Axle Joint Thread Size: M14x1,5
Axle Joint Thread Type: with external thread
Driver Position: For left-hand drive vehicles
Input shaft connecting type: Splined
Input Shaft Diameter [mm]: 14,1
Input shaft height [mm]: 114
Left-hand / Right-hand Traffic: For right-hand traffic
Length 1/ Length 2 [mm]: stroke= 145
Mounting Bores Distance [mm]: 412
Number of splines on input shaft: 26
Number of steering wheel turns: 3
Operating Mode: Electric
Operating Mode: Manual
Overall Length [mm]: 1165
Steering Gear Type: Rack-and-pinion steering gear

Mounting

SG-0003JM

Steering Box



FIAT 500X
 JEEP COMPASS (MP)
 JEEP RENEGADE Fuoristrada chiuso
 JEEP RENEGADE Fuoristrada chiuso (BU)
 JEEP RENEGADE VAN (BU, B1)

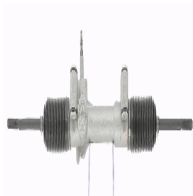
OE

51967456
 51978398
 52005180
 52076430
 52113668

Driver Position: For left-hand drive vehicles
 Length [mm]: 1664
 Mounting Bores Distance [mm]: 412
 Vehicle Equipment: For vehicles with power steering

SG-0004JM

Steering Box



FIAT SEICENTO (187)
 FIAT SEICENTO Van (187)

OE

46536787
 46847283

Axle Joint Thread Size: M12x1,5
 Axle Joint Thread Type: with external thread
 Driver Position: For left-hand drive vehicles
 Input shaft connecting type: Splined
 Input Shaft Diameter [mm]: 14,1
 Input shaft height [mm]: 58,5
 Left-hand / Right-hand Traffic: For right-hand traffic
 Length 1/ Length 2 [mm]: stroke= 150
 Mounting Bores Distance [mm]: 240
 Number of splines on input shaft: 17
 Number of steering wheel turns: 3
 Operating Mode: Electric
 Operating Mode: Manual
 Overall Length [mm]: 910
 Steering Gear Type: Rack-and-pinion steering gear
 Vehicle Equipment: For vehicles with power steering

SG-0005JM

Steering Box



FIAT STILO (192)
 FIAT STILO Multi Wagon (192)

OE

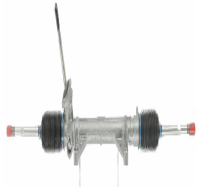
51733142
 51785771
 51809104
 51833718
 51837769
 51931476

Axle Joint Thread Size: M14x1,5
 Axle Joint Thread Type: with external thread
 Driver Position: For left-hand drive vehicles
 Input shaft connecting type: Splined
 Input Shaft Diameter [mm]: 14,1
 Input shaft height [mm]: 136
 Left-hand / Right-hand Traffic: For right-hand traffic
 Length 1/ Length 2 [mm]: stroke= 145
 Mounting Bores Distance [mm]: 436
 Number of splines on input shaft: 26
 Number of steering wheel turns: 3
 Number of Thread Bores: 2
 Operating Mode: Electric
 Operating Mode: Manual
 Overall Length [mm]: 1240
 Steering Gear Type: Rack-and-pinion steering gear

Mounting

SG-0006JM

Steering Box



RENAULT CLIO Grandtour (KR0/1_)
 RENAULT CLIO III (BR0/1, CR0/1)
 RENAULT MODUS / GRAND MODUS (F/JP0_)

OE

48001-BC43A
 8200124407
 8200124408
 8200565645
 8200595934

Axle Joint Thread Size: M14x1,5
 Axle Joint Thread Type: with external thread
 Driver Position: For left-hand drive vehicles
 Input shaft connecting type: Square
 Input Shaft Diameter [mm]: 16,5
 Input shaft height [mm]: 132
 Left-hand / Right-hand Traffic: For right-hand traffic
 Length 1/ Length 2 [mm]: stroke= 130
 Mounting Bores Distance [mm]: 317
 Number of steering wheel turns: 3
 Number of Thread Bores: 2
 Operating Mode: Electric
 Operating Mode: Manual
 Overall Length [mm]: 1245
 Steering Gear Type: Rack-and-pinion steering gear

SG-0007JM

Steering Box



OPEL AGILA (A) (H00)
 SUZUKI WAGON R+ (EM)
 SUZUKI WAGON R+ (MM)

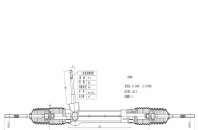
OE

4700659
 48510-83E50
 48510-83E50-000
 900658
 9195074
 9210355

Axle Joint Thread Size: M12x1,25
 Axle Joint Thread Type: with external thread
 Driver Position: For left-hand drive vehicles
 Input shaft connecting type: Square
 Input Shaft Diameter [mm]: 15,7
 Input shaft height [mm]: 52
 Left-hand / Right-hand Traffic: For right-hand traffic
 Length 1/ Length 2 [mm]: stroke= 120
 Number of splines on input shaft: 28
 Number of steering wheel turns: 3
 Operating Mode: Electric
 Operating Mode: Manual
 Overall Length [mm]: 1175
 Steering Gear Type: Rack-and-pinion steering gear

SG-0008JM

Steering Box



FIAT 500 (312)
 FIAT 500 C (312)
 FORD KA (RU8)

OE

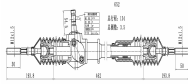
1541354
 1686264
 51786814
 51875886
 51875894
 51889312

Axle Joint Thread Size: M12x1,5
 Axle Joint Thread Type: with external thread
 Driver Position: For left-hand drive vehicles
 Input shaft connecting type: Splined
 Input Shaft Diameter [mm]: 14,1
 Input shaft height [mm]: 128
 Left-hand / Right-hand Traffic: For right-hand traffic
 Length 1/ Length 2 [mm]: stroke= 150
 Mounting Bores Distance [mm]: 339
 Number of splines on input shaft: 26
 Number of steering wheel turns: 3
 Operating Mode: Electric
 Operating Mode: Manual
 Overall Length [mm]: 1045
 Steering Gear Type: Rack-and-pinion steering gear

Mounting

SG-0009JM

Steering Box



FIAT PANDA (141A_)
SEAT PANDA (141A)

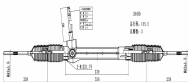
OE

5960838
5970711
7074796
7534669
7582329
7750258

Axle Joint Thread Size: M12x1,5
Axle Joint Thread Type: with external thread
Driver Position: For left-hand drive vehicles
Input shaft connecting type: Splined
Input Shaft Diameter [mm]: 14,1
Input shaft height [mm]: 55
Left-hand / Right-hand Traffic: For right-hand traffic
Length 1/ Length 2 [mm]: stroke= 130
Number of splines on input shaft: 17
Number of steering wheel turns: 4
Operating Mode: Manual
Operating Mode: Mechanical
Overall Length [mm]: 840
Steering Gear Type: Rack-and-pinion steering gear

SG-0010JM

Steering Box



FIAT PANDA (519, 312, 319)
LANCIA YPSILON (312, 846)
LANCIA YPSILON (843)

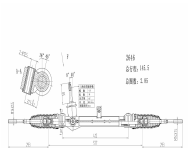
OE

51907994
51907996
51965755

Axle Joint Thread Size: M12x1,5
Axle Joint Thread Type: with external thread
Driver Position: For left-hand drive vehicles
Input shaft connecting type: Splined
Input Shaft Diameter [mm]: 14,1
Input shaft height [mm]: 127
Left-hand / Right-hand Traffic: For right-hand traffic
Length 1/ Length 2 [mm]: stroke= 150
Mounting Bores Distance [mm]: 339
Number of splines on input shaft: 26
Number of steering wheel turns: 3
Operating Mode: Electric
Operating Mode: Manual
Overall Length [mm]: 1015
Steering Gear Type: Rack-and-pinion steering gear

SG-0011JM

Steering Box



FIAT GRANDE PUNTO (199)
FIAT PUNTO Van (199)

OE

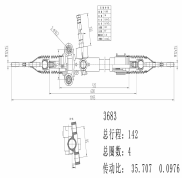
51799754
51802155
51829169
51829620
51861106
55700467

Axle Joint Thread Size: M14x1,5
Axle Joint Thread Type: with external thread
Driver Position: For left-hand drive vehicles
Input shaft connecting type: Splined
Input Shaft Diameter [mm]: 14,1
Input shaft height [mm]: 83,5
Left-hand / Right-hand Traffic: For right-hand traffic
Length 1/ Length 2 [mm]: stroke= 145
Mounting Bores Distance [mm]: 412
Number of splines on input shaft: 26
Operating Mode: Electric
Operating Mode: Manual
Overall Length [mm]: 1170
Steering Gear Type: Rack-and-pinion steering gear

Mounting

SG-0012JM

Steering Box



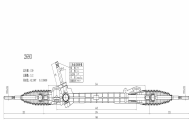
CHEVROLET MATIZ (M200, M250)
CHEVROLET SPARK

OE
95082999
96482901

Axle Joint Thread Size: M12x1,5
Axle Joint Thread Type: with external thread
Driver Position: For left-hand drive vehicles
Input shaft connecting type: Splined
Input Shaft Diameter [mm]: 15,7
Input shaft height [mm]: 133
Left-hand / Right-hand Traffic: For right-hand traffic
Length 1/ Length 2 [mm]: stroke= 145
Number of splines on input shaft: 36
Number of steering wheel turns: 4,5
Operating Mode: Manual
Operating Mode: Mechanical
Overall Length [mm]: 1095
Steering Gear Type: Rack-and-pinion steering gear

SG-0013JM

Steering Box



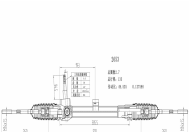
CITROEN C1 (PM_, PN_)
PEUGEOT 107
TOYOTA AYGO (WNB1_, KGB1_)

OE
4001.33
4001.35
4006.61
45500-0H010

Axle Joint Thread Size: M12x1,25
Axle Joint Thread Type: with external thread
Driver Position: For left-hand drive vehicles
Input shaft connecting type: Splined
Input Shaft Diameter [mm]: 14
Input shaft height [mm]: 92
Left-hand / Right-hand Traffic: For right-hand traffic
Length 1/ Length 2 [mm]: stroke= 140
Mounting Bores Distance [mm]: 448
Number of splines on input shaft: 34
Number of steering wheel turns: 3
Operating Mode: Electric
Operating Mode: Manual
Overall Length [mm]: 1050
Steering Gear Type: Rack-and-pinion steering gear

SG-0014JM

Steering Box



FIAT IDEA
LANCIA MUSA (350)

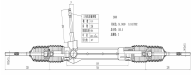
OE
51725101
51832249
51887957

Axle Joint Thread Size: M14x1,5
Axle Joint Thread Type: with external thread
Driver Position: For left-hand drive vehicles
Input shaft connecting type: Splined
Input Shaft Diameter [mm]: 14,1
Input shaft height [mm]: 94
Left-hand / Right-hand Traffic: For right-hand traffic
Length 1/ Length 2 [mm]: stroke= 135
Mounting Bores Distance [mm]: 386
Number of splines on input shaft: 26
Number of steering wheel turns: 3
Operating Mode: Electric
Operating Mode: Manual
Overall Length [mm]: 1030
Steering Gear Type: Rack-and-pinion steering gear

Mounting

SG-0015JM

Steering Box



FIAT PANDA (169)
FIAT PANDA Van (141_)
FIAT PANDA Van (169)

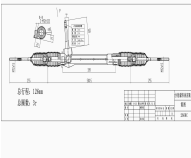
OE

51708841
51876158
51876159
51887444
51887445

Axle Joint Thread Size: M12x1,5
Axle Joint Thread Type: with external thread
Driver Position: For left-hand drive vehicles
Input shaft connecting type: Splined
Input Shaft Diameter [mm]: 14,1
Input shaft height [mm]: 128
Left-hand / Right-hand Traffic: For right-hand traffic
Length 1/ Length 2 [mm]: stroke= 150
Mounting Bores Distance [mm]: 339
Number of splines on input shaft: 26
Number of steering wheel turns: 3
Operating Mode: Electric
Operating Mode: Manual
Overall Length [mm]: 990
Steering Gear Type: Rack-and-pinion steering gear
Vehicle Equipment: For vehicles with power steering

SG-0016JM

Steering Box



FIAT PANDA (169)
FIAT PANDA Van (141_)
FIAT PANDA Van (169)

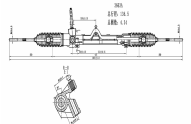
OE

51754435
51754446
51876162
51876163
51876164
51876165

Axle Joint Thread Size: M12x1,5
Axle Joint Thread Type: with external thread
Driver Position: For left-hand drive vehicles
Input shaft connecting type: Splined
Input Shaft Diameter [mm]: 14,1
Input shaft height [mm]: 128
Left-hand / Right-hand Traffic: For right-hand traffic
Length 1/ Length 2 [mm]: stroke= 125
Mounting Bores Distance [mm]: 339
Number of splines on input shaft: 26
Number of steering wheel turns: 3
Operating Mode: Electric
Operating Mode: Manual
Overall Length [mm]: 1010
Steering Gear Type: Rack-and-pinion steering gear

SG-0017JM

Steering Box



FIAT PUNTO (176)
FIAT PUNTO Cabriolet (176C)
FIAT PUNTO Van (176L)
LANCIA Y (840A)

OE

7797607
7797608

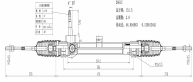
Axle Joint Thread Size: M12x1,5
Axle Joint Thread Type: with external thread
Driver Position: For left-hand drive vehicles
Input shaft connecting type: Splined
Input Shaft Diameter [mm]: 14,1
Input shaft height [mm]: 93
Left-hand / Right-hand Traffic: For right-hand traffic
Length 1/ Length 2 [mm]: stroke= 135
Mounting Bores Distance [mm]: 313
Number of splines on input shaft: 17
Number of steering wheel turns: 4,5
Operating Mode: Manual
Operating Mode: Mechanical
Overall Length [mm]: 1025
Steering Gear Type: Rack-and-pinion steering gear

Mounting

SG-0018JM

Steering Box

FIAT PUNTO (188)
FIAT PUNTO Van (188AX)



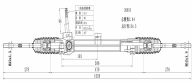
OE
46747626
46753991

Axle Joint Thread Size: M12x1,5
Axle Joint Thread Type: with external thread
Driver Position: For left-hand drive vehicles
Input shaft connecting type: Splined
Input Shaft Diameter [mm]: 14,1
Input shaft height [mm]: 96,5
Left-hand / Right-hand Traffic: For right-hand traffic
Length 1/ Length 2 [mm]: stroke= 130
Mounting Bores Distance [mm]: 386
Number of splines on input shaft: 17
Operating Mode: Electric
Operating Mode: Manual
Overall Length [mm]: 1025
Steering Gear Type: Rack-and-pinion steering gear
Vehicle Equipment: For vehicles with power steering

SG-0019JM

Steering Box

FIAT PUNTO (188)
FIAT PUNTO Van (188AX)



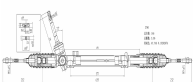
OE
46843300
51705417

Axle Joint Thread Size: M12x1,5
Axle Joint Thread Type: with external thread
Driver Position: For left-hand drive vehicles
Input shaft connecting type: Splined
Input Shaft Diameter [mm]: 14,1
Input shaft height [mm]: 94
Left-hand / Right-hand Traffic: For right-hand traffic
Length 1/ Length 2 [mm]: stroke= 130
Mounting Bores Distance [mm]: 386
Number of splines on input shaft: 26
Operating Mode: Electric
Operating Mode: Manual
Overall Length [mm]: 1025
Steering Gear Type: Rack-and-pinion steering gear
Vehicle Equipment: For vehicles with power steering

SG-0020JM

Steering Box

NISSAN QASHQAI / QASHQAI +2 (J10, JJ10)
RENAULT KOLEOS (HY_)



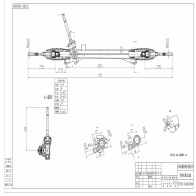
OE
48001-3622R
48001-JD000
48001-JD900
48001-JD90B
48001-JY40A

Axle Joint Thread Size: M14x1,5
Axle Joint Thread Type: with external thread
Driver Position: For left-hand drive vehicles
Input shaft connecting type: Square
Input Shaft Diameter [mm]: 16,5
Left-hand / Right-hand Traffic: For right-hand traffic
Length 1/ Length 2 [mm]: stroke= 155
Mounting Bores Distance [mm]: 317
Number of steering wheel turns: 3,5
Operating Mode: Electric
Operating Mode: Manual
Overall Length [mm]: 1105
Steering Gear Type: Rack-and-pinion steering gear

Mounting

SG-0021JM

Steering Box



NISSAN QASHQAI
 NISSAN QASHQAI (J11, J11_)
 RENAULT KADJAR

OE

48 00 14E H0A
 48001-4EH0A
 48001-4EH0B
 49 00 138 76R

Axle Joint Thread Size: M14x1,5
 Length [mm]: 520
 Mounting Bores Distance [mm]: 290
 Operating Mode: Mechanical